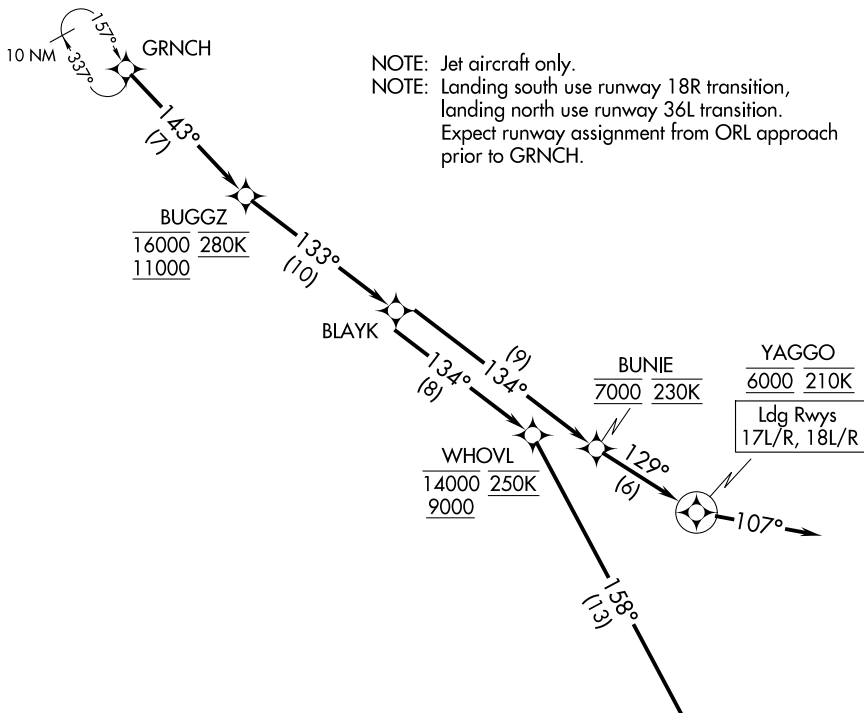


GRNCH FIVE ARRIVAL (RNAV) Arrival Routes

ORLANDO APP CON
134.05 339.8
D-ATIS ARR
121.25

RNAV 1 - DME/DME/IRU or GPS.
RADAR required.

NOTE: Jet aircraft only.
NOTE: Landing south use runway 18R transition,
landing north use runway 36L transition.
Expect runway assignment from ORL approach
prior to GRNCH.



ARRIVAL ROUTE DESCRIPTION

From GRNCH on track 143° to cross BUGGZ between 11000 and 16000 and at 280K, then on track 133° to BLAYK.

LANDING RUNWAYS 17L/R, 18L/R: From BLAYK on track 134° to cross BUNIE at 7000 and at 230K, then on track 129° to cross YAGGO at 6000 and at 210K, then on heading 107°. Expect RADAR vectors to final approach course.

LANDING RUNWAYS 35L/R, 36L/R: From BLAYK on track 134° to cross WHOVL between 9000 and 14000 and at 250K, then on track 158° to HARAM, then on track 181° to cross DORII at or above 8000 and at 220K, then on track 186° to cross BRICE at 5000 and at 210K, then on track 186°. Expect RADAR vectors to final approach course.

NOTE: Chart not to scale.

SE-3, 14 MAY 2026 to 11 JUN 2026

SE-3, 14 MAY 2026 to 11 JUN 2026