

# MUNGI ONE ARRIVAL (RNAV) Transition Routes

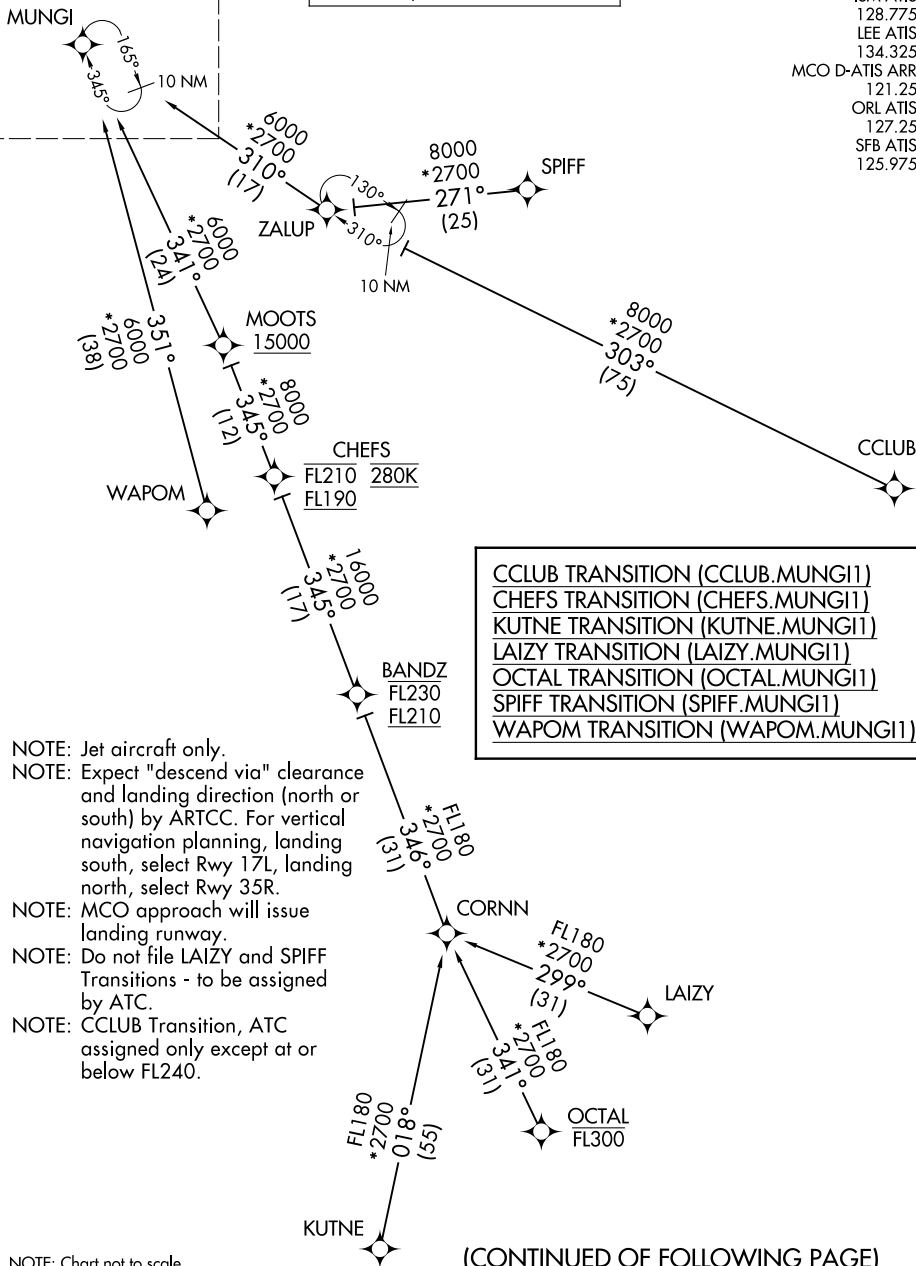
ORLANDO, FLORIDA

See following page for arrival route.

RNAV 1 - DME/DME/IRU or GPS.

RADAR required.

ORLANDO APP CON  
 128.375 338.2  
 ISM ATIS  
 128.775  
 LEE ATIS  
 134.325  
 MCO D-ATIS ARR  
 121.25  
 ORL ATIS  
 127.25  
 SFB ATIS  
 125.975



- NOTE: Jet aircraft only.
- NOTE: Expect "descend via" clearance and landing direction (north or south) by ARTCC. For vertical navigation planning, landing south, select Rwy 17L, landing north, select Rwy 35R.
- NOTE: MCO approach will issue landing runway.
- NOTE: Do not file LAIZY and SPIFF Transitions - to be assigned by ATC.
- NOTE: CCLUB Transition, ATC assigned only except at or below FL240.

NOTE: Chart not to scale.

(CONTINUED OF FOLLOWING PAGE)

SE-3, 14 MAY 2026 to 11 JUN 2026

SE-3, 14 MAY 2026 to 11 JUN 2026