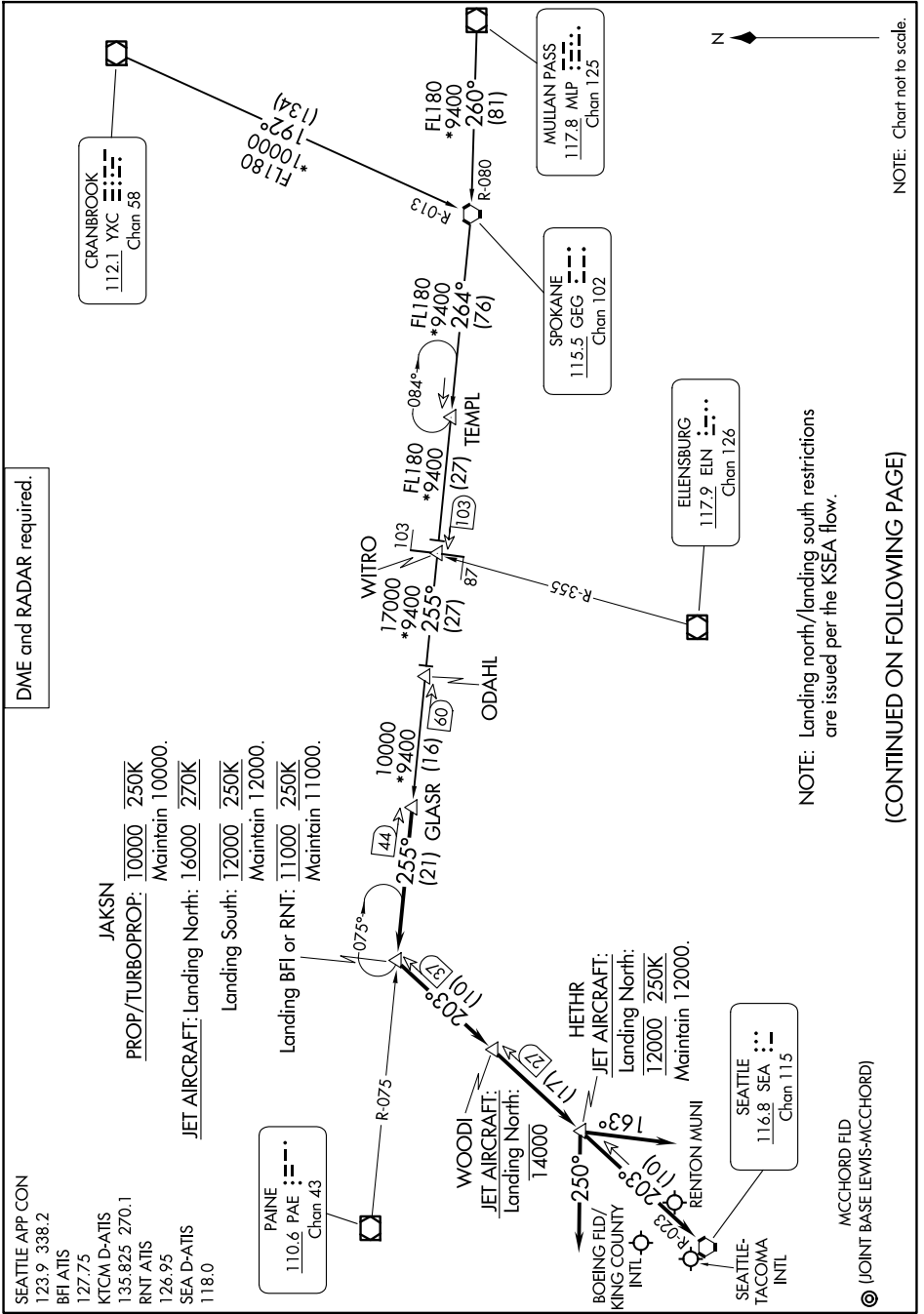


GLASR THREE ARRIVAL

AL-582 (FAA)

SEATTLE, WASHINGTON

NW-1, 14 MAY 2026 to 11 JUN 2026



GLASR THREE ARRIVAL

SEATTLE, WASHINGTON

NOTE: Chart not to scale.

NOTE: Landing north/landing south restrictions are issued per the KSEA flow.

(CONTINUED ON FOLLOWING PAGE)

NW-1, 14 MAY 2026 to 11 JUN 2026

© (JOINT BASE LEWIS-MCCORD)