

# MARNR EIGHT ARRIVAL (RNAV) Transition Routes

BUHNR TRANSITION (BUHNR.MARNR8)

JIGEB TRANSITION (JIGEB.MARNR8)

ROESH TRANSITION (ROESH.MARNR8)

TATOOSH TRANSITION (TOU.MARNR8)

VIXOR TRANSITION (VIXOR.MARNR8)

SEATTLE APP CON  
125.6 273.45  
D-ATIS  
118.0

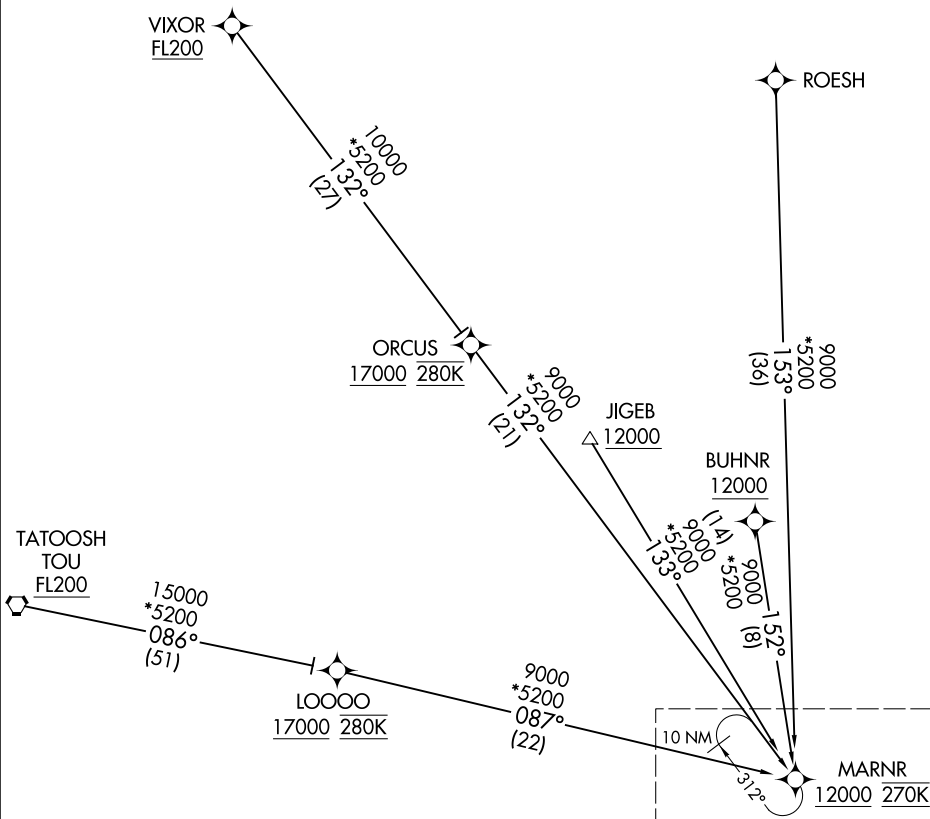
RNAV 1 - DME/DME/IRU or GPS.

RADAR required.

NOTE: Jet aircraft descend via mach number until intercepting 280K. Maintain 280K until slowed by the STAR.

NOTE: Non-RNP AR aircraft landing Rwy 34L/C/R, expect RADAR vectors to final approach course prior to EMMSS.

NOTE: Expect assigned instrument approach prior to GRIFY.



NOTE: Chart not to scale.

(CONTINUED ON FOLLOWING PAGE)

See following page for Arrival Routes.

# MARNR EIGHT ARRIVAL (RNAV) Transition Routes

NW-1, 14 MAY 2026 to 11 JUN 2026

NW-1, 14 MAY 2026 to 11 JUN 2026