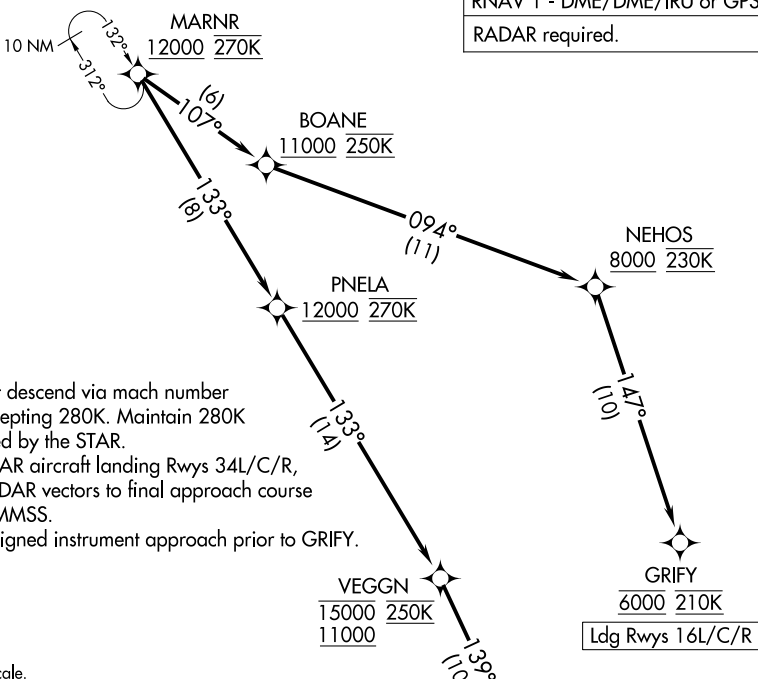


# MARNR EIGHT ARRIVAL (RNAV) Arrival Routes

SEATTLE-TACOMA INTL (SEA)  
SEATTLE, WASHINGTON

SEATTLE APP CON  
125.6 273.45  
D-ATIS  
118.0

RNAV 1 - DME/DME/IRU or GPS.  
RADAR required.



- NOTE: Jet aircraft descend via mach number until intercepting 280K. Maintain 280K until slowed by the STAR.
- NOTE: Non-RNP AR aircraft landing Rwy 34L/C/R, expect RADAR vectors to final approach course prior to EMMSS.
- NOTE: Expect assigned instrument approach prior to GRIFY.

NOTE: Chart not to scale.

## ARRIVAL ROUTE DESCRIPTION

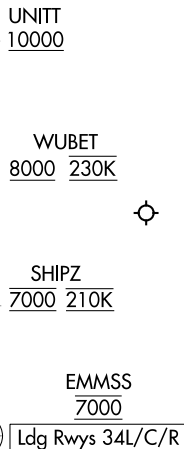
**LANDING RUNWAYS 16L/C/R:** From MARNR on track 107° to cross BOANE at or above 11000 and at 250K, then on track 094° to cross NEHOS at or above 8000 and at 230K, then on track 147° to cross GRIFY at 6000 and at 210K. Expect RNAV or ILS approach.

**LANDING RUNWAYS 34L/C/R:** From MARNR on track 133° to cross PNELA at or above 12000 and at 270K, then on track 133° to cross VEGGN between 11000 and 15000 and at 250K, then on track 139° to cross UNITT at or above 10000, then on track 164° to cross WUBET at or above 8000 and at 230K, then on track 164° to cross SHIPZ at 7000 and at 210K, then on track 164° to cross EMMSS at 7000, then on track 164°. Expect RADAR vectors to final approach course.

### LOST COMMUNICATIONS:

**LANDING RUNWAY 16:** At GRIFY, proceed on the ILS RWY 16R approach.

**LANDING RUNWAY 34:** At EMMSS, proceed direct to SONDR and then on the ILS RWY 34L approach.



SEATTLE, WASHINGTON  
SEATTLE-TACOMA INTL (SEA)