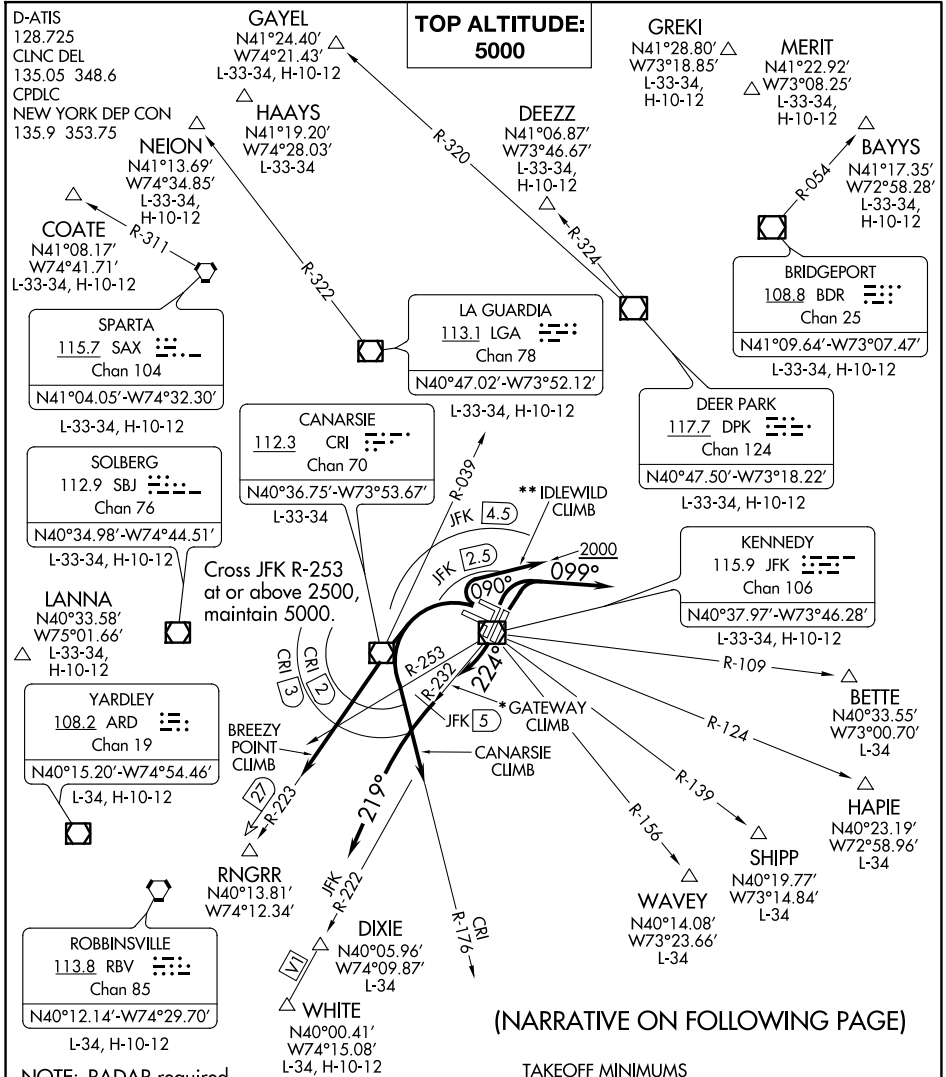


KENNEDY FIVE DEPARTURE

AL-610 (FAA)

JOHN F KENNEDY INTL (JFK)
NEW YORK, NEW YORK



**TOP ALTITUDE:
5000**

**LA GUARDIA
113.1 LGA**
Chan 78
N40°47.02'-W73°52.12'

**BRIDGEFORT
108.8 BDR**
Chan 25
N41°09.64'-W73°07.47'

**DEER PARK
117.7 DPK**
Chan 124
N40°47.50'-W73°18.22'

**KENNEDY
115.9 JFK**
Chan 106
N40°37.97'-W73°46.28'

**CANARSIE
112.3 CRI**
Chan 70
N40°36.75'-W73°53.67'

**SOLBERG
112.9 SBJ**
Chan 76
N40°34.98'-W74°44.51'

**LANNA
N40°33.58'
W75°01.66'**
L-33-34, H-10-12

**YARDLEY
108.2 ARD**
Chan 19
N40°15.20'-W74°54.46'

**ROBBINSVILLE
113.8 RBV**
Chan 85
N40°12.14'-W74°29.70'

**DIXIE
N40°05.96'
W74°09.87'**
L-34

**WHITE
N40°00.41'
W74°15.08'**
L-34, H-10-12

(NARRATIVE ON FOLLOWING PAGE)

TAKEOFF MINIMUMS

Rwys 4L/R, 13L/R, 22L/R, 31L/R: Standard.

*NOTE: DME required. To be assigned during the period of 2200-0700 local.

**NOTE: To be assigned to non-turbojet aircraft. If unable to remain within JFK 2.5 DME, advise ATC.

NOTE: Chart not to scale.

- NOTE: RADAR required.
- NOTE: BAYYS departures expect vectors to BDR VOR/DME or BDR R-054.
- NOTE: BETTE departures expect vectors to JFK R-109.
- NOTE: COATE departures expect vectors to SAX VORTAC or SAX R-311.
- NOTE: DIXIE departures expect vectors to JFK R-222.
- NOTE: HAPIE departures expect vectors to JFK R-124.
- NOTE: RBV departures expect vectors to RBV after RNGRR.
- NOTE: SHIPP departures expect vectors to JFK R-139.
- NOTE: WAVEY departures expect vectors to JFK R-156.
- NOTE: WHITE departures expect vectors to V1.

NE-2, 14 MAY 2026 to 11 JUN 2026

NE-2, 14 MAY 2026 to 11 JUN 2026