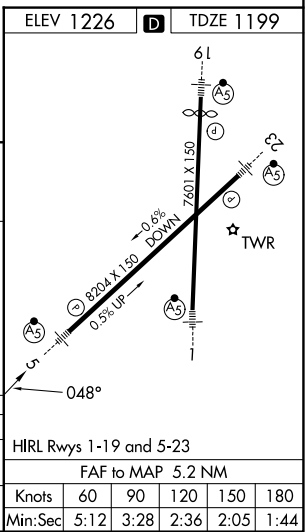
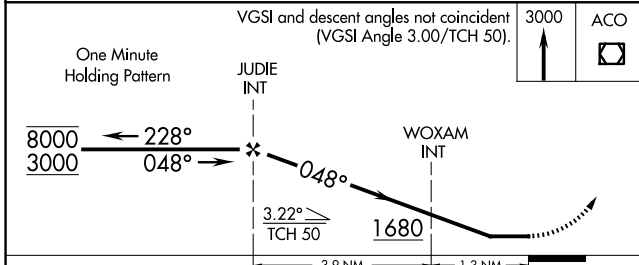
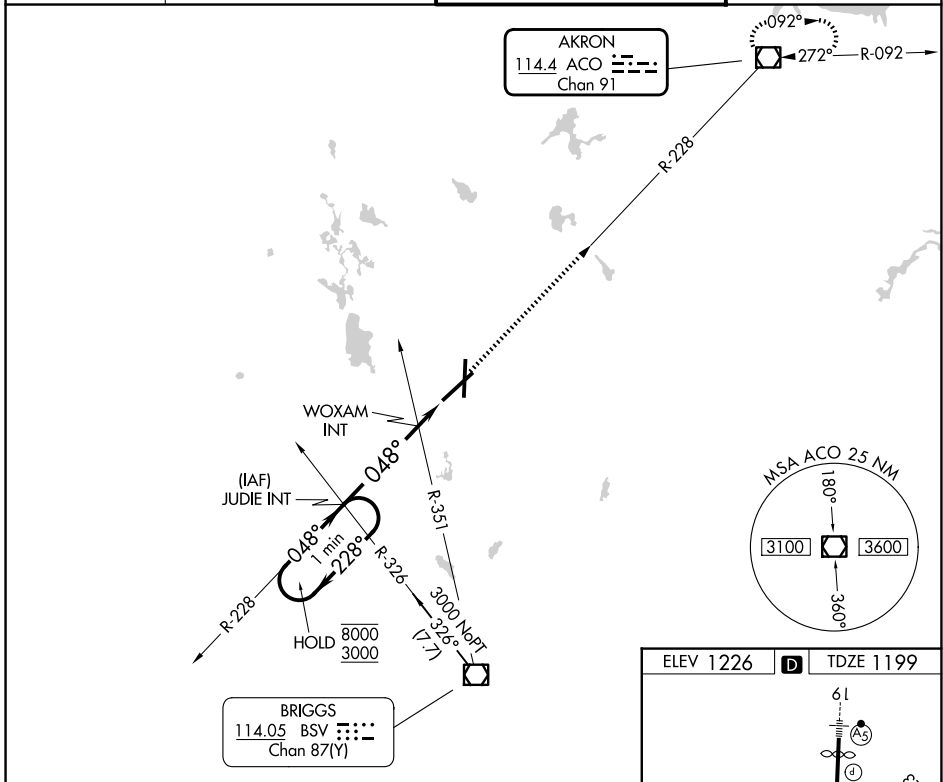


VOR/DME ACO 114.4 Chan 91	APP CRS 048°	Rwy Ldg TDZE Apt Elev	8204 1199 1226
---	------------------------	-----------------------------	---

VOR RWY 5

AKRON-CANTON RGNL (CAK)

Dual VOR receivers required.		MALSR	MISSED APPROACH: Climb to 3000 direct ACO VOR/DME and hold.
ATIS 121.05	CLEVELAND APP CON* 125.5 269.25	AKRON-CANTON TOWER 134.75 279.575	GND CON 121.7 348.6



CATEGORY	A	B	C	D
S-5	1600/24	401 (400-½)	1600/40	1600/50
			401 (400-¾)	401 (400-1)
CIRCLING	1760-1	534 (600-1)	1780-1½	1800-2
			554 (600-1½)	574 (600-2)

FAF to MAP 5.2 NM					
Knots	60	90	120	150	180
Min:Sec	5:12	3:28	2:36	2:05	1:44