

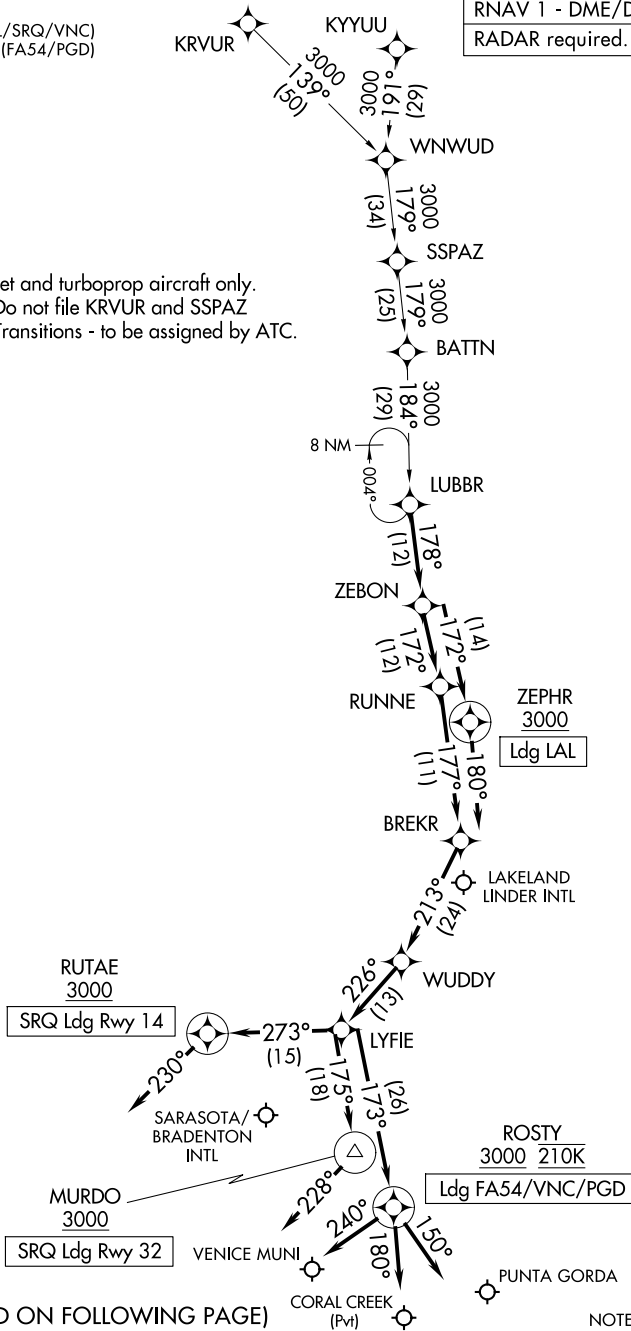
# LUBBR FOUR ARRIVAL (RNAV)

SARASOTA/BRADENTON, FLORIDA

TAMPA APP CON  
 135.5 279.6 (LAL/SRQ/VNC)  
 119.65 353.575 (FA54/PGD)  
 LAL ATIS  
 118.025  
 PGD ATIS  
 135.675  
 SRQ ATIS  
 124.375

RNAV 1 - DME/DME/IRU or GPS. RADAR required.
---

NOTE: Jet and turboprop aircraft only.  
 NOTE: Do not file KRVUR and SSPAZ  
 Transitions - to be assigned by ATC.



SE-3, 14 MAY 2026 to 11 JUN 2026

SE-3, 14 MAY 2026 to 11 JUN 2026

(CONTINUED ON FOLLOWING PAGE)

NOTE: Chart not to scale.

# LUBBR FOUR ARRIVAL (RNAV)

SARASOTA/BRADENTON, FLORIDA