

WAAS CH <b>40411</b> <b>W17A</b>	APP CRS <b>168°</b>	Rwy Ldg TDZE Apt Elev	<b>10000</b> <b>5708</b> <b>5759</b>
----------------------------------------	------------------------	-----------------------------	--------------------------------------------

# RNAV (GPS) RWY 17

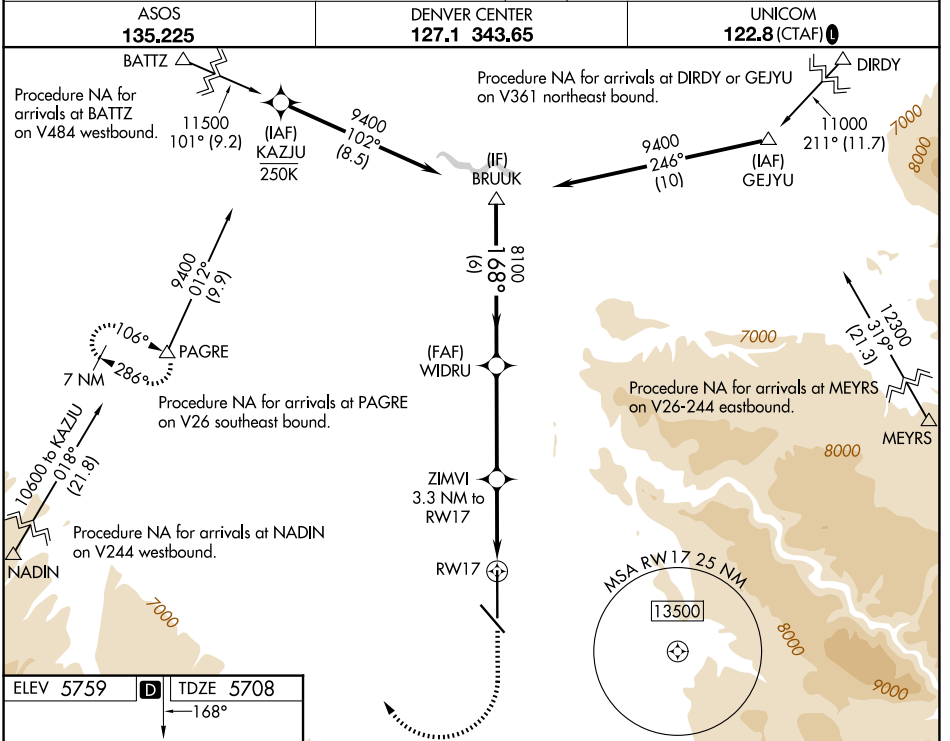
MONTROSE RGNL (MTJ)

RNP APCH - GPS.

**⚠** Circling NA east of Rwy 17 and northeast of Rwy 31. Circling Rwy 31 NA at night. When Circling to Rwy 13 at night, operational VGSI required, remain on or above VGSI glidepath until threshold. Baro-VNAV NA.

MALSRL

MISSED APPROACH: (Do not exceed 250K until PAGRE) Climb to 6200 then climbing right turn to 11000 direct PAGRE and hold, continue climb in hold to 11000.



ELEV 5759 TDZE 5708

168°

AS5

6200

11000

PAGRE

BRUUK

WIDRU

ZIMVI 3.3 NM to RW17

8100

9400

1.3 NM to RW17

1.3 NM

2.1 NM

4.1 NM

6 NM

GP 3.00° TCH 56

REIL Rws 31 and 35

HIRL Rws 13-31 and 17-35

CATEGORY	A	B	C	D
LPV DA		5908-1/2	200 (200-1/2)	
LNAV/VNAV DA		6136-3/4	428 (400-3/4)	
LNAV MDA	6160-1/2	452 (500-1/2)	6160-3/4	452 (500-3/4)
CIRCLING	6280-1 521 (600-1)	6320-1 561 (600-1)	6420-1 3/4 661 (700-1 3/4)	6800-3 1041 (1100-3)

SW-1, 14 MAY 2026 to 11 JUN 2026

SW-1, 14 MAY 2026 to 11 JUN 2026