

VOR/DME MTJ	APP CRS	Rwy Ldg TDZE	7510
117.1	117°	5723	
Chan 118		Apt Elev	5759

VOR RWY 13

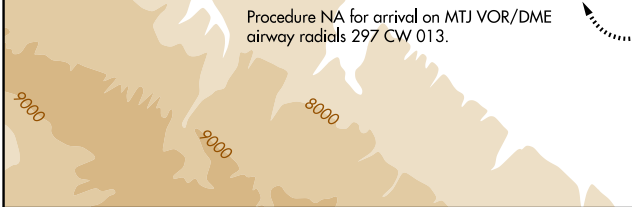
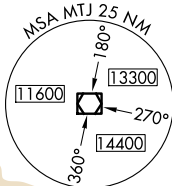
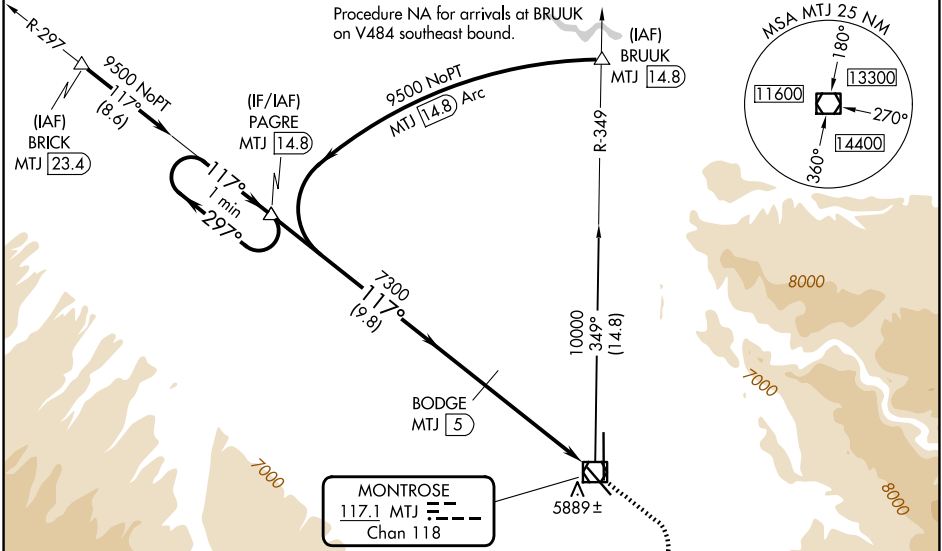
MONTROSE RGNL (MTJ)

DME required.

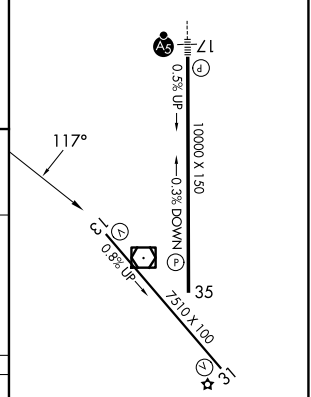
⚠ Straight-in Rwy 13 at night, operational VGSI required, remain on or above VGSI glidepath until threshold. Rwy 13 helicopter visibility reduction below 1 SM NA. Circling Rwy 31 NA at night. Circling NA east of Rwy 17 and northeast of Rwy 31. When local altimeter setting not received, use Delta altimeter setting: increase all MDAs 140 feet and visibility S-13 Cats C and D ½ SM and Circling Cat C ¼ SM.

MISSED APPROACH: Climb to 6600 then climbing right turn to 9500 on MTJ VOR/DME R-297 to PAGRE/14.8 DME and hold.

ASOS 135.225	DENVER CENTER 127.1 343.65	UNICOM 122.8 (CTAF)
------------------------	--------------------------------------	-------------------------------



ELEV 5759	D	TDZE 5723
-----------	---	-----------



One Minute Holding Pattern	PAGRE MTJ [14.8]	6600	9500	PAGRE
9500	←297°	117°	7300	3.14° TCH 42
				MTJ VOR/DME
	9.8 NM	4.7 NM		

CATEGORY	A	B	C	D
S-13	6140-1	417 (400-1)	6140-1½	417 (400-1½)
CIRCLING	6280-1 521 (600-1)	6420-1 661 (700-1)	6640-2¾ 881 (900-2¾)	6800-3 1041 (1100-3)

REIL Rws 31 and 35
HIRL Rws 13-31 and 17-35

SW-1, 14 MAY 2026 to 11 JUN 2026

SW-1, 14 MAY 2026 to 11 JUN 2026