

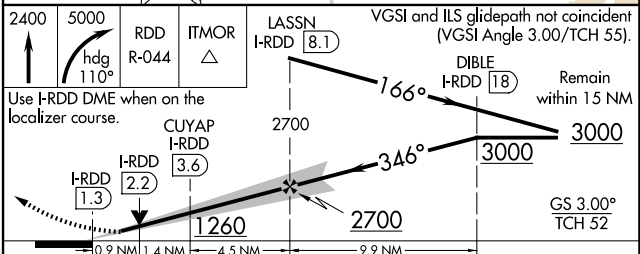
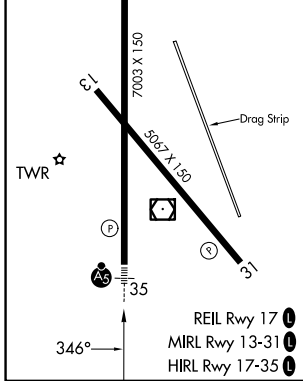
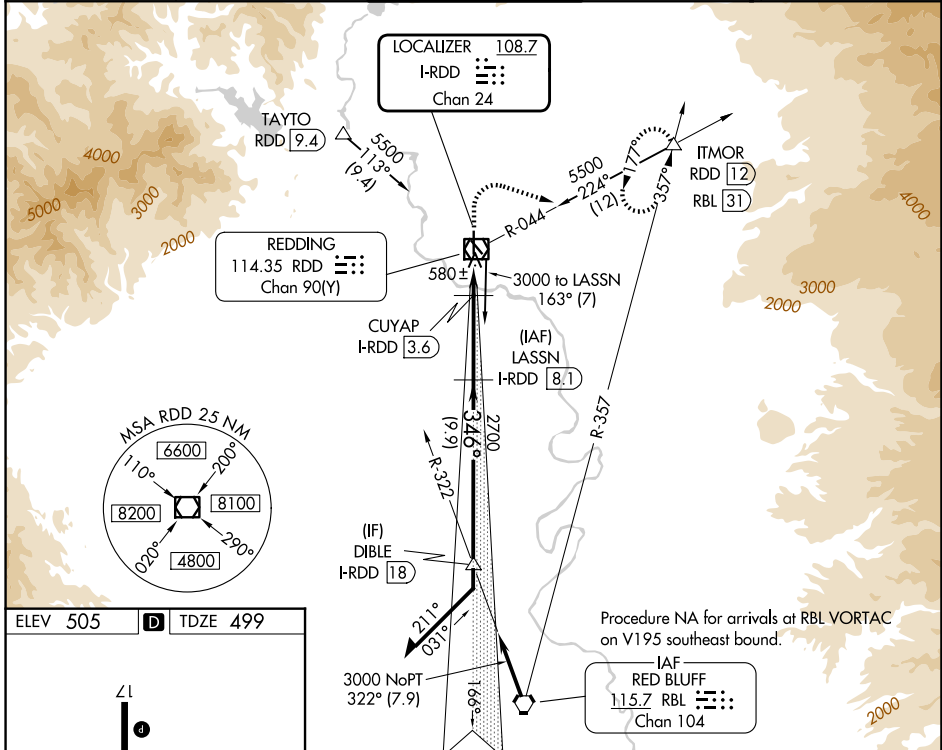
LOC/DME I-RDD 108.7 Chan 24	APP CRS 346°	Rwy Ldg TDZE 499 Apt Elev 505
---	------------------------	---

ILS or LOC RWY 35

REDDING RGNL (RDD)

DME required for LOC only.		MALSR 	MISSED APPROACH: Climb to 2400 then climbing right turn to 5000 on heading 110° and RDD R-044 to ITMOR INT/RDD 12 DME and hold, continue climb-in-hold to 5000.
<p> Circling Rwy 13 NA at night.</p> <p> Rwy 35 helicopter visibility reduction below 3/4 SM NA.</p> <p>For inop ALS, increase S-LOC 35 all Cats visibility to 1 SM.</p> <p>Inop table does not apply to S-ILS 35.</p>			

ATIS 124.1	OAKLAND CENTER 132.2 350.3	REDDING TOWER ★ 119.8(CTAF) 269.25	GND CON 121.7	UNICOM 122.95
----------------------	--------------------------------------	--	-------------------------	-------------------------



CATEGORY	A	B	C	D	E
S-ILS 35		749-3/4	250 (300-3/4)		
S-LOC 35		840-3/4	341 (400-3/4)		
CIRCLING	960-1	1000-1	1120-1 3/4	1340-2 3/4	1340-3
	455 (500-1)	495 (500-1)	615 (700-1 1/4)	835 (900-2 3/4)	835 (900-3)

SW-2, 14 MAY 2026 to 11 JUN 2026

SW-2, 14 MAY 2026 to 11 JUN 2026