

LOC/DME I-RDD 108.7 Chan 24	APP CRS 166°	Rwy Ldg TDZE 7003 505	Apt Elev 505
--	------------------------	---	------------------------

LOC BC RWY 17

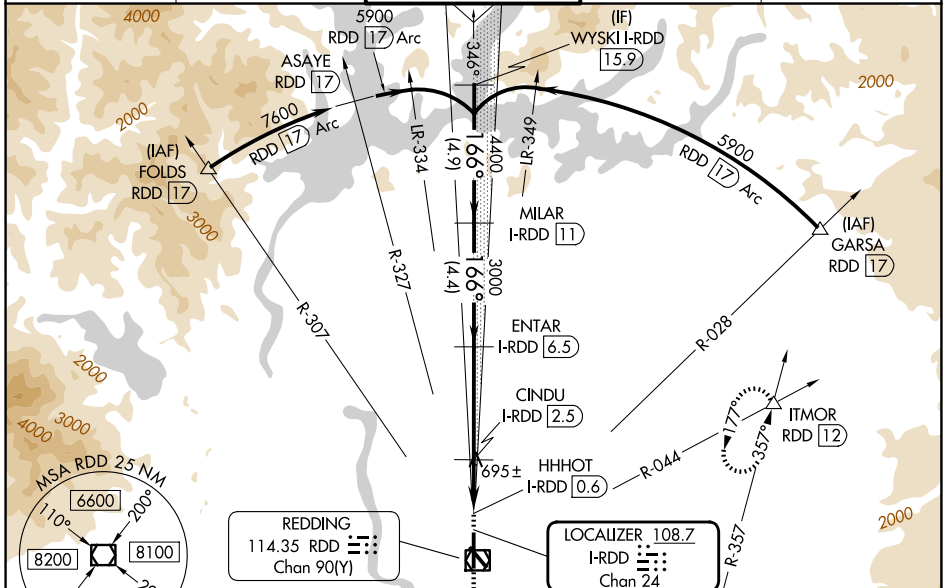
REDDING RGNL (RDD)

DME required.

▼ Rwy 17 helicopter visibility reduction below ¾ SM NA.
 ▲ Circling Rwy 13, NA at night.

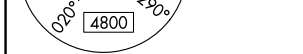
MISSED APPROACH: Climb to 2000 then climbing left turn to 5000 on heading 015° and RDD VOR/DME R-044 to ITMOR INT/RDD 12 DME and hold, continue climb-in-hold to 5000.

ATIS 124.1	OAKLAND CENTER 132.2 350.3	REDDING TOWER * 119.8(CTAF) 269.25	GND CON 121.7	UNICOM 122.95
----------------------	--------------------------------------	--	-------------------------	-------------------------



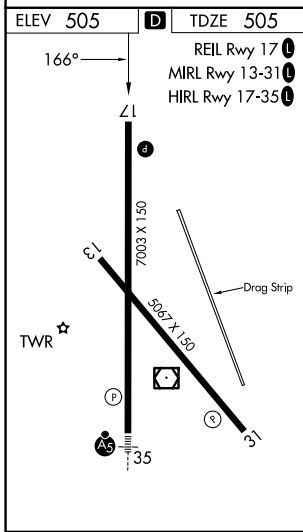
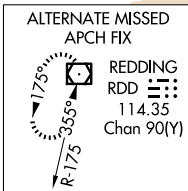
SW-2, 14 MAY 2026 to 11 JUN 2026

SW-2, 14 MAY 2026 to 11 JUN 2026

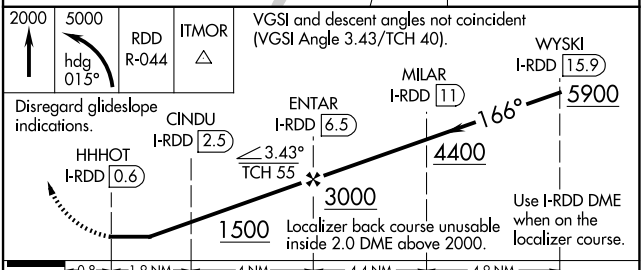


REDDING
114.35 RDD
Chan 90(Y)

LOCALIZER 108.7
I-RDD
Chan 24



BACK COURSE



CATEGORY	A	B	C	D
S-17	960-1	455 (500-1)	960-1 3/8	455 (500-1 3/8)
CIRCLING	960-1 455 (500-1)	1000-1 495 (500-1)	1120-1 3/4 615 (700-1 3/4)	1340-2 3/4 835 (900-2 3/4)