

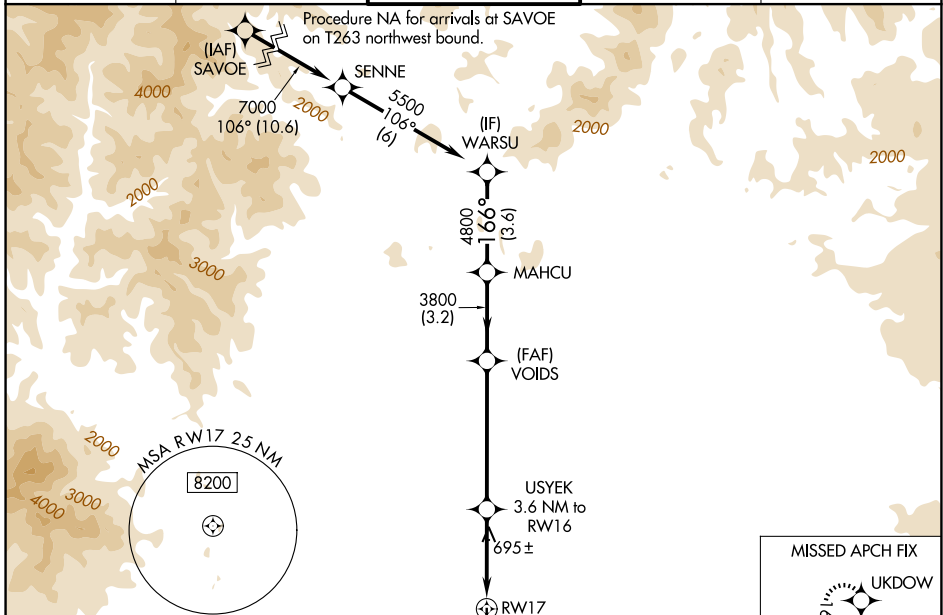
WAAS CH <b>86443</b> <b>W17A</b>	APP CRS <b>166°</b>	Rwy Ldg TDZE <b>505</b> Apt Elev <b>505</b>	<b>7003</b>
--	------------------------	---	-------------

# RNAV (GPS) RWY 17

REDDING RGNL (RDD)

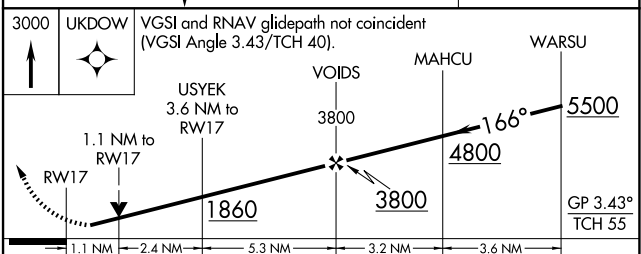
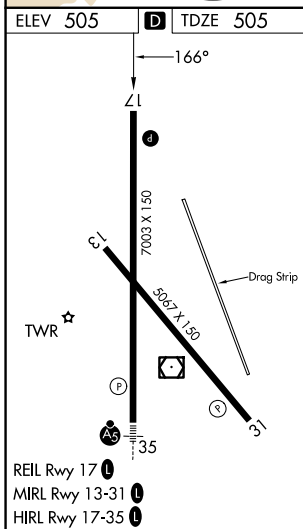
RNP APCH - GPS.		MISSED APPROACH: Climb to 3000 direct UKDOW and hold.		
<p>▼ Rwy 17 helicopter visibility reduction below 3/4 SM NA.</p> <p>⚠ For uncompensated Baro-VNAV systems, LNAV/VNAV NA below -2°C or above 53°C. Circling Rwy 13 NA at night.</p>				

ATIS <b>124.1</b>	OAKLAND CENTER <b>132.2 350.3</b>	REDDING TOWER * <b>119.8 (CTAF) 0 269.25</b>	GND CON <b>121.7</b>	UNICOM <b>122.95</b>
----------------------	--------------------------------------	---	-------------------------	-------------------------



SW-2, 14 MAY 2026 to 11 JUN 2026

SW-2, 14 MAY 2026 to 11 JUN 2026



CATEGORY	A	B	C	D
LPV DA		821-7/8	316 (400-7/8)	
LNAV/VNAV DA		911-1 1/8	406 (500-1 1/8)	
LNAV MDA	960-1	455 (500-1)	960-1 3/8	455 (500-1 3/8)
CIRCLING	960-1 455 (500-1)	1000-1 495 (500-1)	1120-1 3/4 615 (700-1 3/4)	1340-2 3/4 835 (900-2 3/4)