

WAAS CH 56402 W35A	APP CRS 346°	Rwy Ldg TDZE Apt Elev	6997 499 505
---------------------------------	------------------------	-----------------------------	---

RNAV (GPS) RWY 35

REDDING RGNL (RDD)

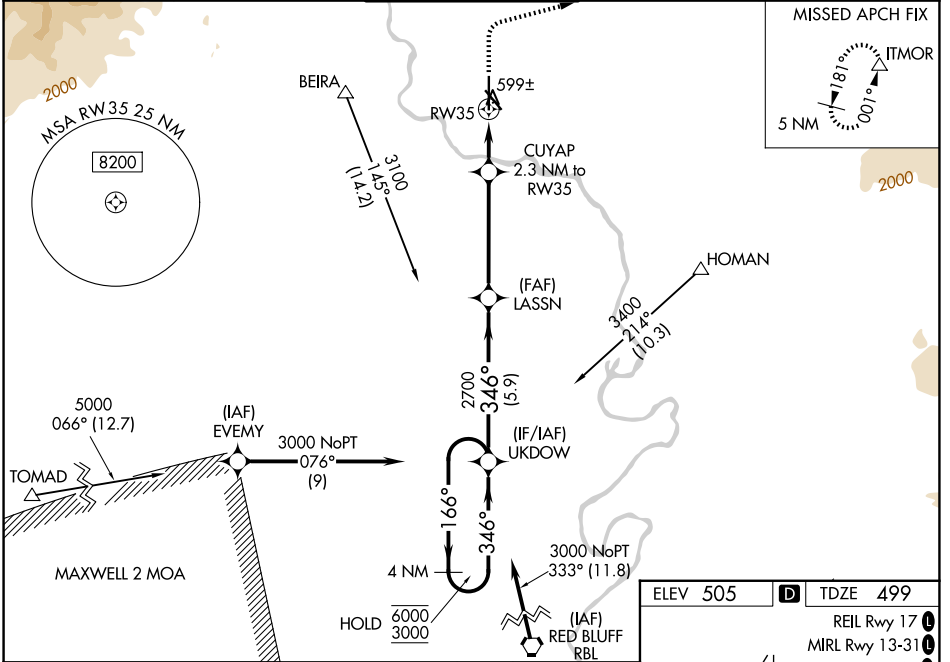
RNP APCH - GPS.

⚠ For uncompensated Baro-VNAV systems, LNAV/VNAV NA below -2°C or above 54°C. Circling Rwy 13 NA at night. Rwy 35 helicopter visibility reduction below 3/4 SM NA. Inop table does not apply to LPV all Cats. LNAV/VNAV minimums: For inop ALS, increase visibility all Cats to 3/4 SM. LNAV minimums: For inop ALS, increase visibility all Cats to 1 SM.

MALSR

MISSED APPROACH: Climb to 1700 then climbing right turn to 5000 direct ITMOR, continue climb-in-hold to 5000.

ATIS 124.1	OAKLAND CENTER 132.2 350.3	REDDING TOWER ★ 119.8(CTAF) 0 269.25	GND CON 121.7	UNICOM 122.95
----------------------	--------------------------------------	--	-------------------------	-------------------------



4 NM Holding Pattern

VGSI and RNAV glidepath not coincident (VGSI Angle 3.00/TCH 55).

1700	5000	ITMOR

UKDOW

6000 \leftarrow 166° \rightarrow 3000

GP 3.00° TCH 52

346° \rightarrow 2700

LASSN 2700

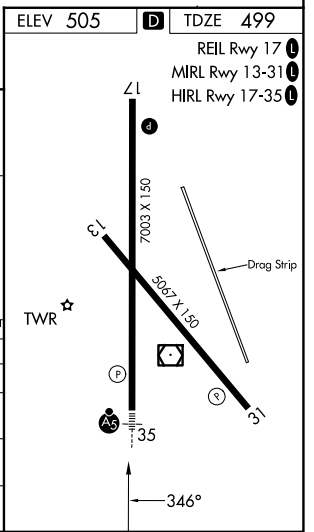
CUYAP 2.3 NM to RW35

1260

1 NM to RW35

5.9 NM | 4.5 NM | 1.3 NM | 1 NM

CATEGORY	A	B	C	D
LPV DA		749-3/4	250 (300-3/4)	
LNAV/VNAV DA		768-3/4	269 (300-3/4)	
LNAV MDA		860-3/4	361 (400-3/4)	
CIRCLING	960-1 455 (500-1)	1000-1 495 (500-1)	1120-1 3/4 615 (700-1 3/4)	1340-2 3/4 835 (900-2 3/4)



SW-2, 14 MAY 2026 to 11 JUN 2026

SW-2, 14 MAY 2026 to 11 JUN 2026