


VOR/DME RDD <b>114.35</b> Chan <b>90</b> (Y)	APP CRS <b>355°</b>	Rwy Ldg <b>6997</b> TDZE <b>499</b> Apt Elev <b>505</b>
--	------------------------	---

# VOR RWY 35

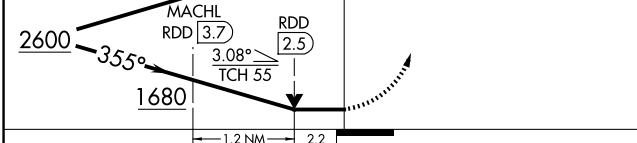
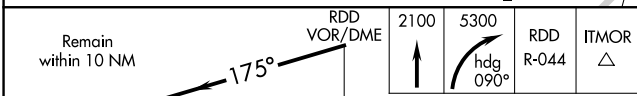
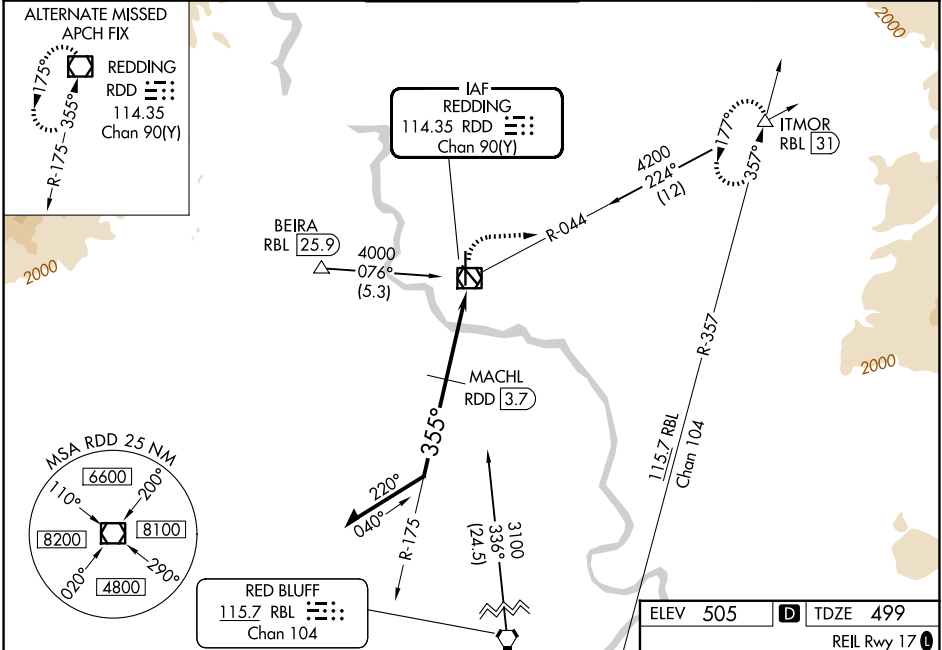
REDDING RGNL (RDD)

**⚠** Circling Rwy 13 NA at night. Rwy 35 helicopter visibility reduction below 3/4 SM NA. MACHL fix minimums and VOR minimums: Inop table does not apply to S-35 Cats C/D. MACHL fix minimums: For inop ALS, increase S-35 Cat A visibility to 1 SM.

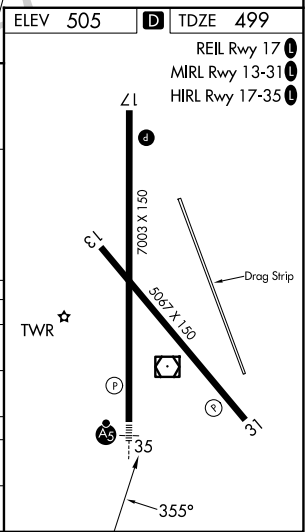
MALSR 

MISSED APPROACH: Climb to 2100 then climbing right turn to 5300 on heading 090° and on RDD VOR/DME R-044 to ITMOR INT/RBL 31 DME and hold, continue climb-in-hold to 5300.

ATIS <b>124.1</b>	OAKLAND CENTER <b>132.2 350.3</b>	REDDING TOWER ★ <b>119.8</b> (CTAF) <b>269.25</b>	GND CON <b>121.7</b>	UNICOM <b>122.95</b>
----------------------	--------------------------------------	--	-------------------------	-------------------------



CATEGORY	A	B	C	D
S-35	1680-3/4 1181 (1200-3/4)	1680-1 1181 (1200-1)	1680-3	1181 (1200-3)
CIRCLING	1680-1 1/4 1175 (1200-1 1/4)	1680-1 1/2 1175 (1200-1 1/2)	1680-3	1175 (1200-3)
MACHL FIX MINIMUMS				
S-35	1260-3/4	761 (800-3/4)	1260-2 1/2	761 (800-2 1/2)
CIRCLING	1260-1 755 (800-1)	1260-1 1/4 755 (800-1 1/4)	1260-2 1/2 755 (800-2 1/2)	1340-2 3/4 835 (900-2 3/4)



SW-2, 14 MAY 2026 to 11 JUN 2026

SW-2, 14 MAY 2026 to 11 JUN 2026