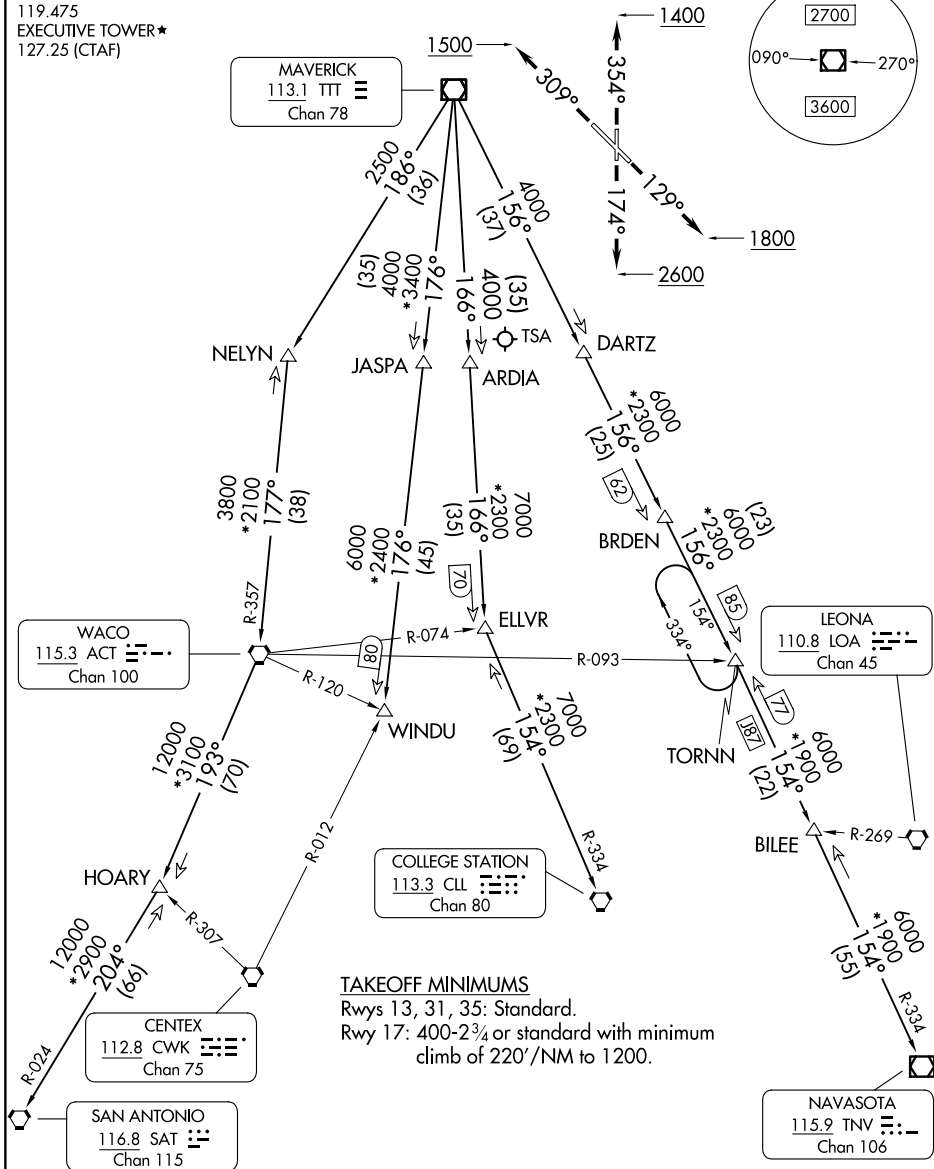
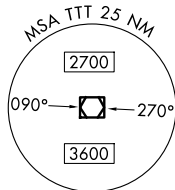


# JOE POOL EIGHT DEPARTURE

LONE STAR DEP CON  
125.2 343.65  
ATIS  
126.35  
CLNC DEL  
118.625  
GND CON  
119.475  
EXECUTIVE TOWER★  
127.25 (CTAF)

RADAR and DME required.

**TOP ALTITUDE:  
ASSIGNED BY ATC**



(CONTINUED ON FOLLOWING PAGE)

NOTE: Chart not to scale.

# JOE POOL EIGHT DEPARTURE

SC-2, 14 MAY 2026 to 11 JUN 2026

SC-2, 14 MAY 2026 to 11 JUN 2026