

KINGDOM FIVE DEPARTURE

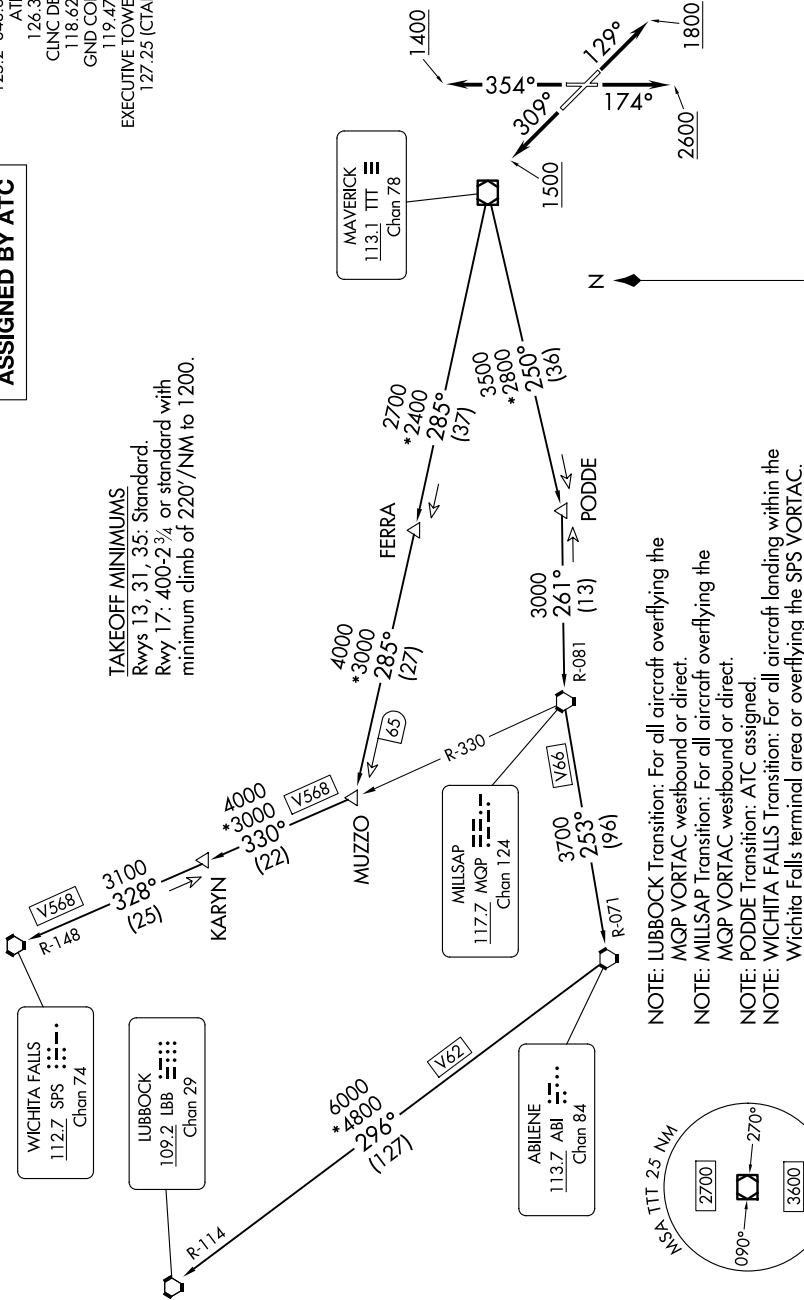
SC-2, 14 MAY 2026 to 11 JUN 2026

RADAR and DME required.

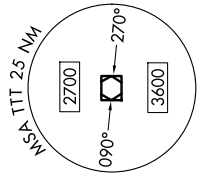
**TOP ALTITUDE:
ASSIGNED BY ATC**

LONE STAR DEP CON
125.2 343.65
ATIS
126.35
CINC DEL
118.625
GND CON
119.475
EXECUTIVE TOWER*
127.25 (CTAF)

TAKEOFF MINIMUMS
Rwys 13, 31, 35: Standard.
Rwy 17: 400-2 3/4 or standard with
minimum climb of 220'/NM to 1200.



- NOTE: LUBBOCK Transition: For all aircraft overlying the MQP VORTAC westbound or direct.
- NOTE: MILLSAP Transition: For all aircraft overlying the MQP VORTAC westbound or direct.
- NOTE: PODDE Transition: ATC assigned.
- NOTE: WICHITA FALLS Transition: For all aircraft landing within the Wichita Falls terminal area or overlying the SPS VORTAC.
- NOTE: For all aircraft requesting 17000 and below.



NOTE: Chart not to scale.

(CONTINUED ON FOLLOWING PAGE)

SC-2, 14 MAY 2026 to 11 JUN 2026

KINGDOM FIVE DEPARTURE