

KUSSO THREE DEPARTURE (RNAV)

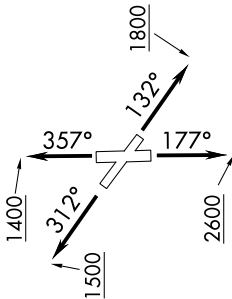
SC-2, 14 MAY 2026 to 11 JUN 2026

LONE STAR DEP CON
 125.2 343.65
 ATIS
 126.35
 CLNC DEL
 118.625
 GND CON
 119.475
 EXECUTIVE TOWER *
 127.25 (CTAF)

TAKEOFF MINIMUMS

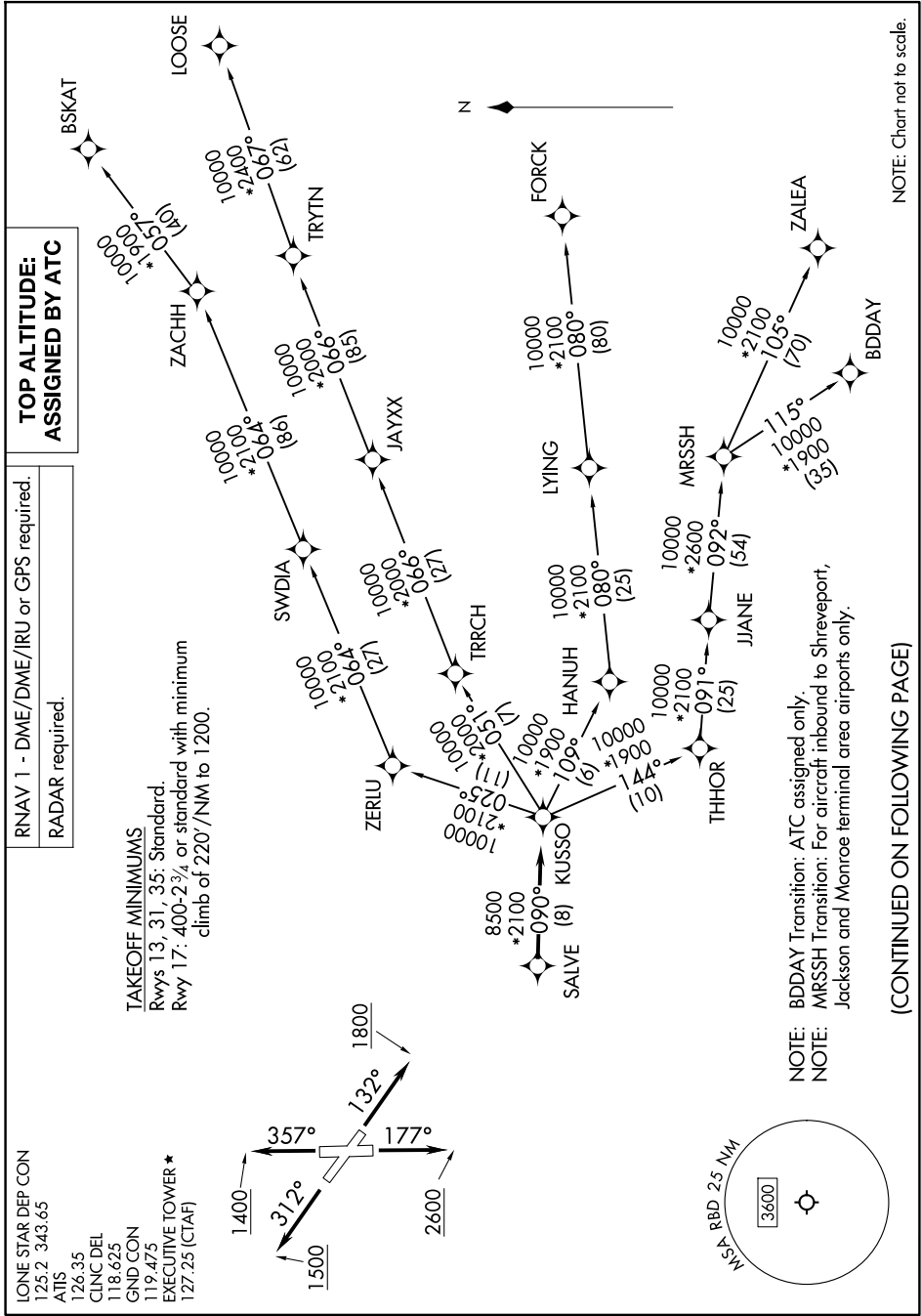
Rwys 13, 31, 35: Standard

Rwy 17: 400-2³/₄ or standard with minimum climb of 220'/NM to 1200.



RNAV 1 - DME/DME/IRU or GPS required.
 RADAR required.

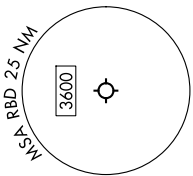
TOP ALTITUDE: ASSIGNED BY ATC



NOTE: Chart not to scale.

NOTE: BDDAY Transition: ATC assigned only.
 MRSSH Transition: For aircraft inbound to Shreveport, Jackson and Monroe terminal area airports only.

(CONTINUED ON FOLLOWING PAGE)



KUSSO THREE DEPARTURE (RNAV)

SC-2, 14 MAY 2026 to 11 JUN 2026