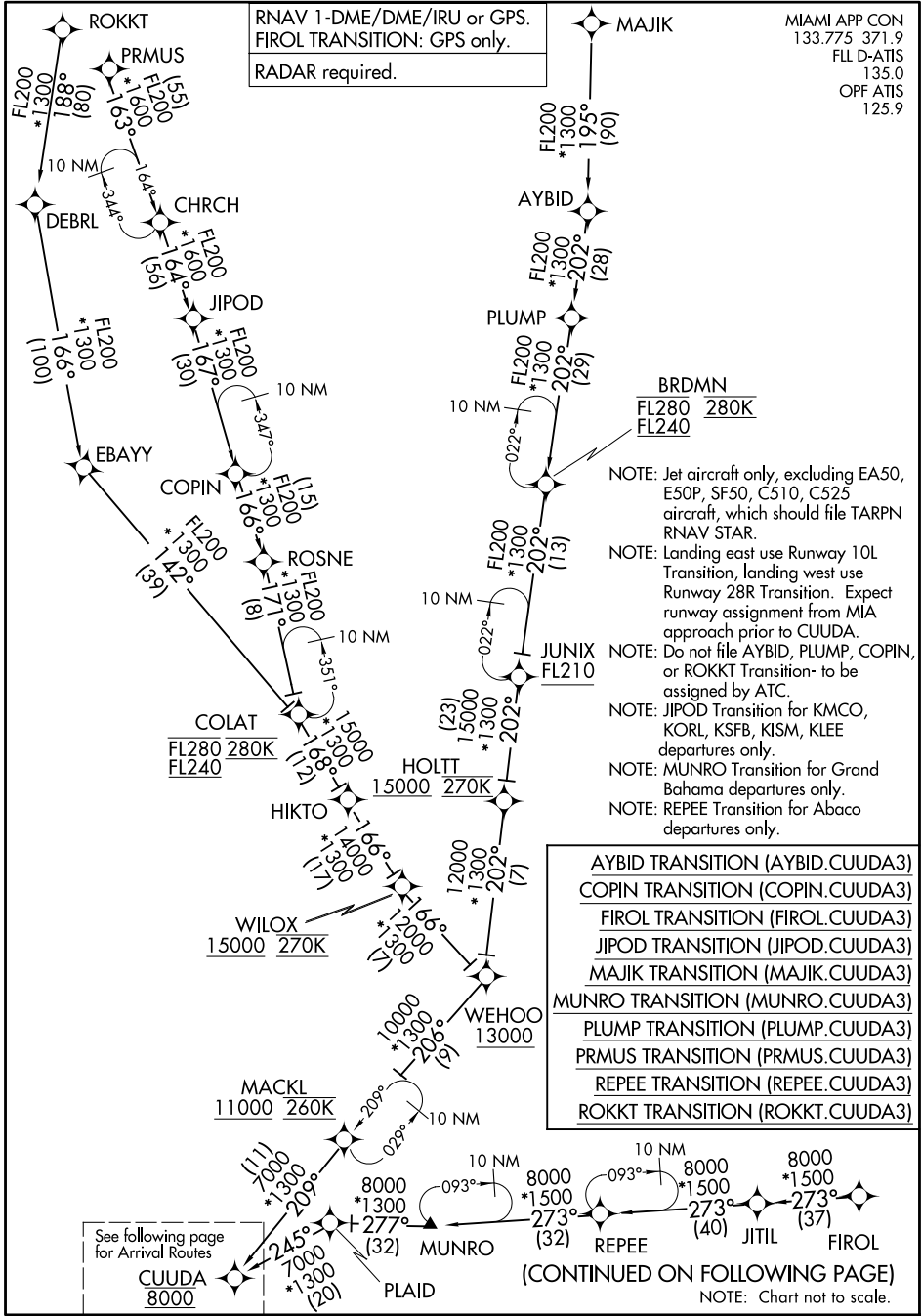


CUUDA THREE ARRIVAL (RNAV) Transition Routes FORT LAUDERDALE, FLORIDA

RNAV 1-DME/DME/IRU or GPS.
 FIORL TRANSITION: GPS only.
 RADAR required.

MIAMI APP CON
 133.775 371.9
 FL D-ATIS
 135.0
 OPF ATIS
 125.9



- NOTE: Jet aircraft only, excluding EA50, E50P, SF50, C510, C525 aircraft, which should file TARPEN RNAV STAR.
- NOTE: Landing east use Runway 10L Transition, landing west use Runway 28R Transition. Expect runway assignment from MIA approach prior to CUUDA.
- NOTE: Do not file AYBID, PLUMP, COPIN, or ROKKT Transition- to be assigned by ATC.
- NOTE: JIPOD Transition for KMCO, KORL, KSFB, KISM, KLEE departures only.
- NOTE: MUNRO Transition for Grand Bahama departures only.
- NOTE: REPEE Transition for Abaco departures only.

- AYBID TRANSITION (AYBID.CUUDA3)
- COPIN TRANSITION (COPIN.CUUDA3)
- FIORL TRANSITION (FIORL.CUUDA3)
- JIPOD TRANSITION (JIPOD.CUUDA3)
- MAJIK TRANSITION (MAJIK.CUUDA3)
- MUNRO TRANSITION (MUNRO.CUUDA3)
- PLUMP TRANSITION (PLUMP.CUUDA3)
- PRMUS TRANSITION (PRMUS.CUUDA3)
- REPEE TRANSITION (REPEE.CUUDA3)
- ROKKT TRANSITION (ROKKT.CUUDA3)

See following page for Arrival Routes

CUUDA
8000

(CONTINUED ON FOLLOWING PAGE)
 NOTE: Chart not to scale.

SE-3, 14 MAY 2026 to 11 JUN 2026

SE-3, 14 MAY 2026 to 11 JUN 2026

CUUDA THREE ARRIVAL (RNAV) Transition Routes FORT LAUDERDALE, FLORIDA