

CUUDA THREE ARRIVAL (RNAV) Arrival Routes

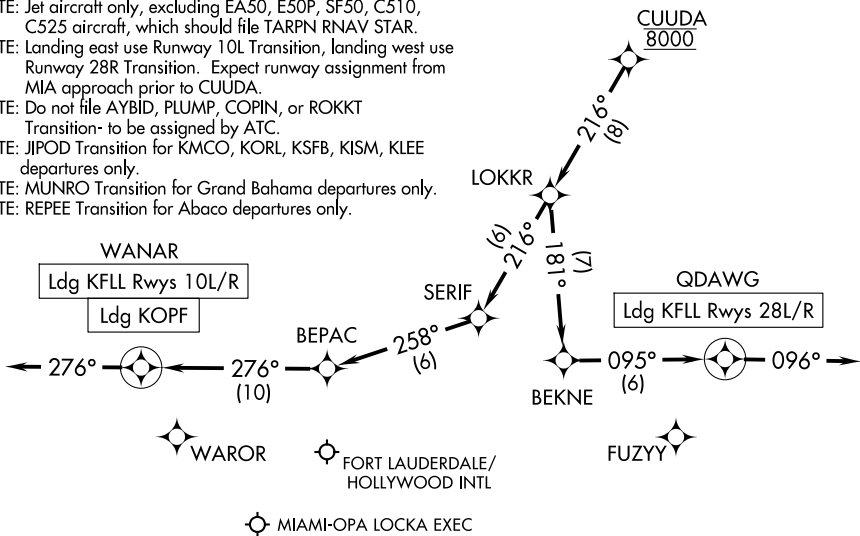
FORT LAUDERDALE, FLORIDA

MIAMI APP CON
 133.775 371.9
 FLL D-ATIS
 135.0
 OPF ATIS
 125.9

RNAV 1-DME/DME/IRU or GPS.
 FIROL TRANSITION: GPS only.

RADAR required.

- NOTE: Jet aircraft only, excluding EA50, E50P, SF50, C510, C525 aircraft, which should file TARPEN RNAV STAR.
- NOTE: Landing east use Runway 10L Transition, landing west use Runway 28R Transition. Expect runway assignment from MIA approach prior to CUUDA.
- NOTE: Do not file AYBID, PLUMP, COPIN, or ROKKT Transition- to be assigned by ATC.
- NOTE: JIPOD Transition for KMCO, KORL, KSFB, KISM, KLEE departures only.
- NOTE: MUNRO Transition for Grand Bahama departures only.
- NOTE: REPEE Transition for Abaco departures only.



NOTE: Chart not to scale.

ARRIVAL ROUTE DESCRIPTION

FLL: From CUUDA on track 216° to LOKKR.

LANDING KFL RUNWAYS 10L/R: From LOKKR on track 216° to SERIF, then on track 258° to BEPAC, then on track 276° to WANAR, then on track 276°.
 Expect RADAR vectors to final approach course.

LANDING KFL RUNWAYS 28L/R: From LOKKR on track 181° to BEKNE, then on track 095° to QDAWG, then on track 096°.
 Expect RADAR vectors to final approach course.

LANDING KOPF: From CUUDA on track 216° to LOKKR, then on track 216° to SERIF, then on track 258° to BEPAC, then on track 276° to WANAR, then on track 276°.
 Expect RADAR vectors to final approach course.