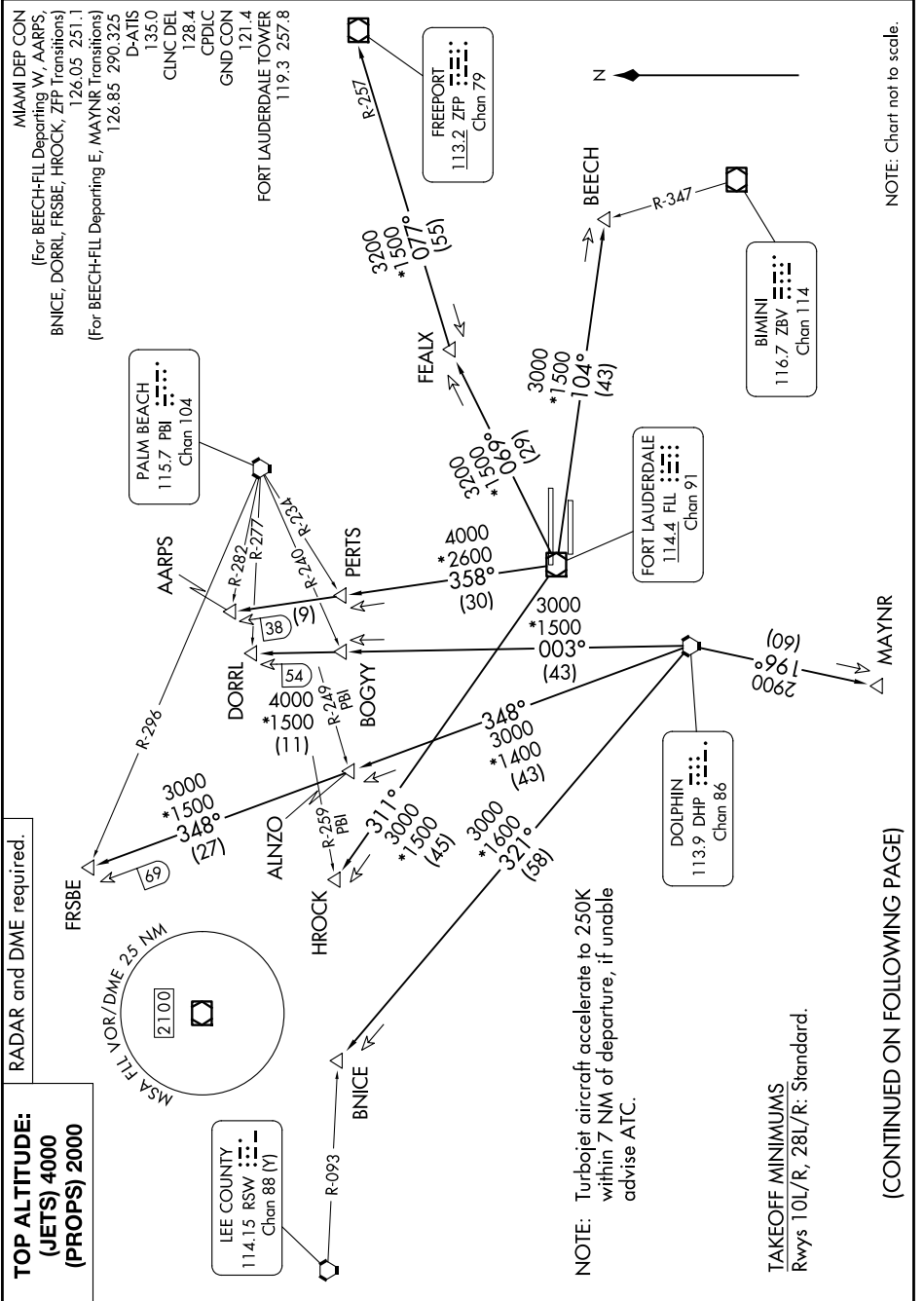


FORT LAUDERDALE TWO DEPARTURE

FORT LAUDERDALE, FLORIDA

SE-3, 14 MAY 2026 to 11 JUN 2026



NOTE: Chart not to scale.

SE-3, 14 MAY 2026 to 11 JUN 2026

TOP ALTITUDE:
(JETS) 4000
(PROPS) 2000

RADAR and DME required.

NOTE: Turbojet aircraft accelerate to 250K within 7 NM of departure, if unable advise ATC.

TAKEOFF MINIMUMS
 Rwy's 10L/R, 28L/R: Standard.

(CONTINUED ON FOLLOWING PAGE)

FORT LAUDERDALE TWO DEPARTURE

FORT LAUDERDALE, FLORIDA