

(GLADZ4.GLADZ) 25331

AL-744 (FAA)

FORT LAUDERDALE/HOLLYWOOD INTL (FLL)

GLADZ FOUR DEPARTURE (RNAV) Departure Routes

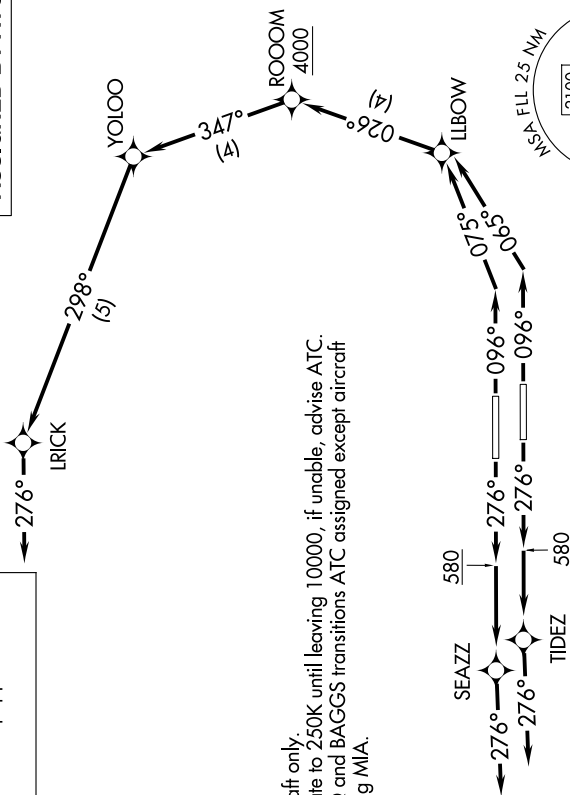
FORT LAUDERDALE, FLORIDA

SE-3, 14 MAY 2026 to 11 JUN 2026

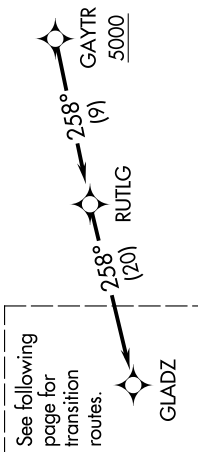
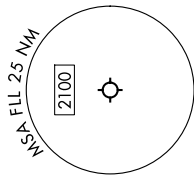
**TOP ALTITUDE:
ASSIGNED BY ATC**

RNAV-1 DME/DME/IRU or GPS.
RADAR required for NON-GPS equipped aircraft.
RADAR required.

MIAMI DEP CON
126.05 251.1 (Departing E)
126.85 290.325 (Departing W)
D-ATIS
135.0
CLNC DEL
128.4
CFD/C
121.4
GND CON
121.4
FORT LAUDERDALE TOWER
119.3 257.8



NOTE: Jet aircraft only.
NOTE: Accelerate to 250K until leveling 10000, if unable, advise ATC.
NOTE: SHAGG and BAGGS transitions ATC assigned except aircraft departing MIA.



See following page for transition routes.

TAKEOFF MINIMUMS
Rwys 10L/R, 28L/R: Standard with minimum climb of 500'/NM to 580.

(CONTINUED ON FOLLOWING PAGE)

NOTE: Chart not to scale.

SE-3, 14 MAY 2026 to 11 JUN 2026

GLADZ FOUR DEPARTURE (RNAV) Departure Routes

FORT LAUDERDALE, FLORIDA

(GLADZ4.GLADZ) 31OCT24

FORT LAUDERDALE/HOLLYWOOD INTL (FLL)