

(GLADZ4.GLADZ) 25331

# GLADZ FOUR DEPARTURE (RNAV) Transition Routes

AL-744 (FAA)

FORT LAUDERDALE/HOLLYWOOD INTL (FLL)

FORT LAUDERDALE, FLORIDA

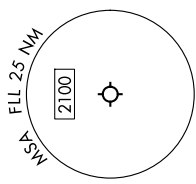
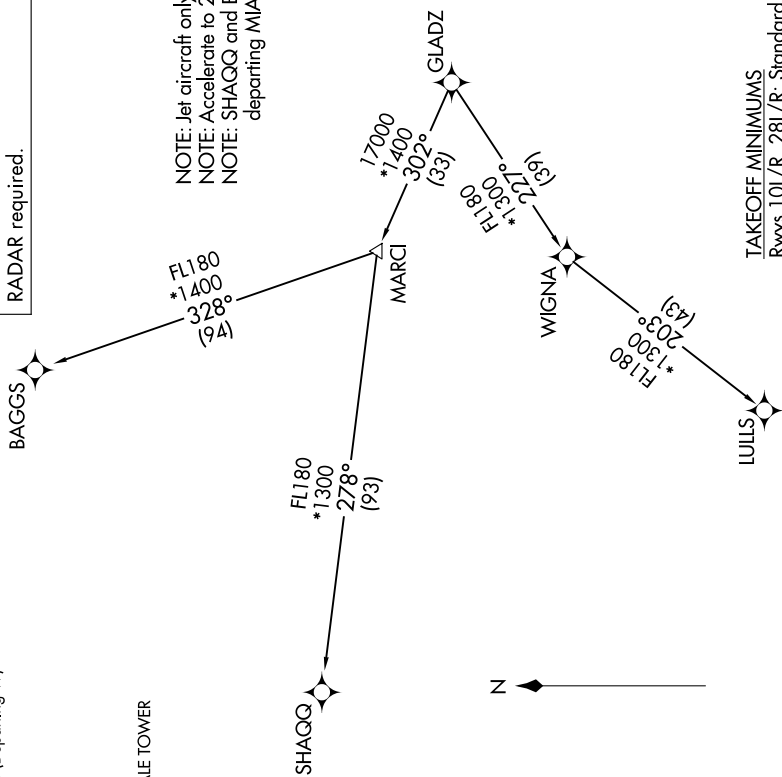
SE-3, 14 MAY 2026 to 11 JUN 2026

**TOP ALTITUDE:  
ASSIGNED BY ATC**

RNAV-1 DME/DME/IRU or GPS.  
RADAR required for NON-GPS equipped aircraft.  
RADAR required.

MIAMI DEP CON  
126.05 251.1 (Departing E)  
126.85 290.325 (Departing W)  
D-ATIS  
135.0  
CLINC DEL  
128.4  
CPDLC  
GND CON  
121.4  
FORT LAUDERDALE TOWER  
119.3 257.8

NOTE: Jet aircraft only.  
NOTE: Accelerate to 250K until leaving 10000, if unable, advise ATC.  
NOTE: SHAGG and BAGGS transitions ATC assigned except aircraft departing MIA.



TAKEOFF MINIMUMS  
Rwys 10L/R, 28L/R: Standard with minimum climb of 500'/NM to 580.



(CONTINUED ON FOLLOWING PAGE)

NOTE: Chart not to scale.

SE-3, 14 MAY 2026 to 11 JUN 2026

# GLADZ FOUR DEPARTURE (RNAV) Transition Routes

(GLADZ4.GLADZ) 31OCT24

FORT LAUDERDALE, FLORIDA

FORT LAUDERDALE/HOLLYWOOD INTL (FLL)