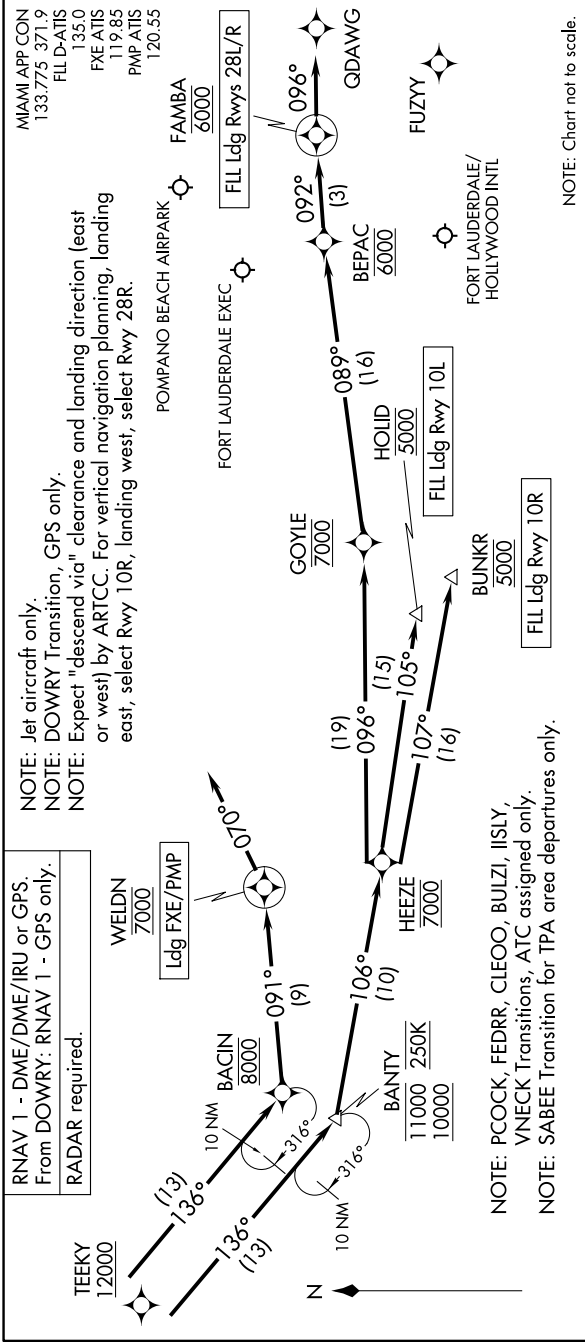


TEEKY FOUR ARRIVAL (RNAV)

Arrival Routes

FORT LAUDERDALE, FLORIDA

SE-3, 14 MAY 2026 to 11 JUN 2026



TEEKY FOUR ARRIVAL (RNAV)

Arrival Routes

FORT LAUDERDALE, FLORIDA

ARRIVAL ROUTE DESCRIPTION

FLL: From TEEKY on track 136° to cross BANTY between 10000 and 11000 and at 250K, then on track 106° to cross HEEZE at 7000.

LANDING FLL RUNWAY 10L: From HEEZE on track 105° to cross HOJID at 5000. Expect ILS or LOC Rwy 10L approach.

LANDING FLL RUNWAY 10R: From HEEZE on track 107° to cross BUNKR at 5000. Expect ILS or LOC Rwy 10R approach.

LANDING FLL RUNWAYS 28L/R: From HEEZE on track 096° to cross GOYLE at 7000, then on track 089° to cross BEPAC at 6000, then on track 092° to cross FAMBA at 6000. Expect RADAR vectors to final approach course.

LANDING FXE/PMP: From TEEKY on track 136° to cross BACIN at 8000, then on track 091° to cross WELDN at 7000, then on track 070°. Expect RADAR vectors to final approach course.

SE-3, 14 MAY 2026 to 11 JUN 2026