

|  |                        |                             |   |
|--|------------------------|-----------------------------|---|
| WAAS<br>CH <b>82737</b><br><b>W36A</b> | APP CRS<br><b>357°</b> | Rwy Ldg<br>TDZE<br>Apt Elev | <b>5301</b><br><b>934</b><br><b>934</b> |
|--|------------------------|-----------------------------|---|

# RNAV (GPS) RWY 36

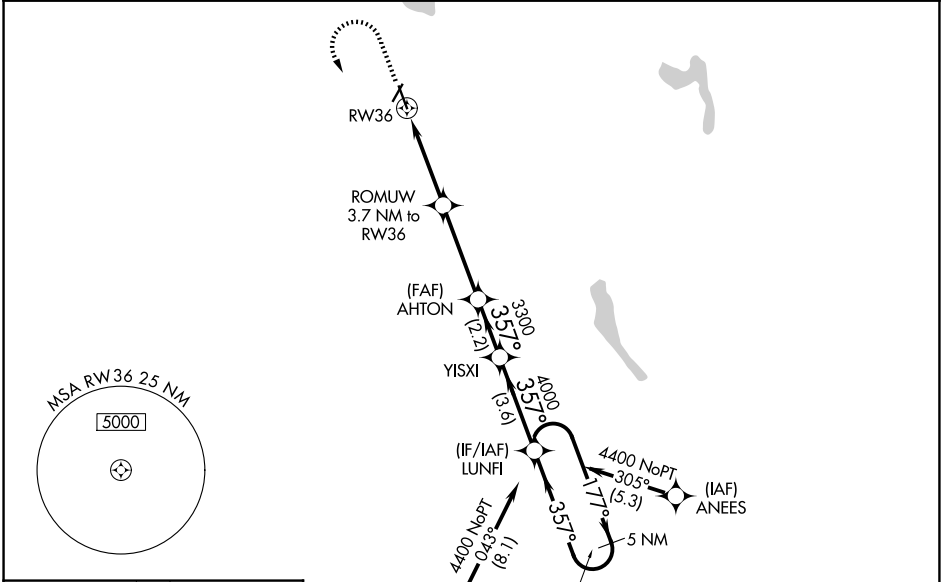
NORTHEAST KINGDOM INTL (EFK)

RNP APCH - GPS.

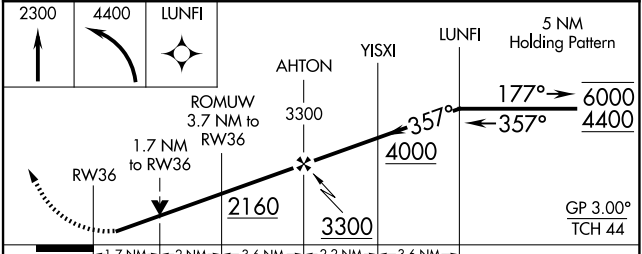
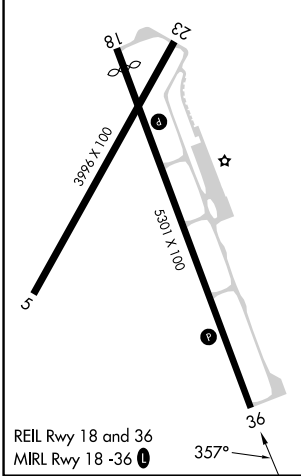
**⚠** Circling to Rwy 5 and 23 NA at night. Rwy 36 helicopter visibility reduction below 3/4 SM NA. For uncompensated Baro-VNAV systems, LNAV/VNAV NA below -16°C or above 54°C.  
**⚠** When local altimeter setting not received, use MVL altimeter setting and increase LPV DA to 1275 feet and all visibilities 1/4 SM; increase LNAV/VNAV DA to 1557 feet and all visibilities 1/4 SM; increase all MDAs 100 feet and LNAV visibility Cat C 3/8 SM. Baro-VNAV and VDP NA when using MVL altimeter setting.

**MISSED APPROACH:**  
Climb to 2300 then climbing left turn to 4400 direct LUNFI and hold.

|                           |                                     |  |
|---------------------------|-------------------------------------|--|
| AWOS-3P<br><b>118.275</b> | BOSTON CENTER<br><b>135.7 282.2</b> | UNICOM<br><b>122.8 (CTAF)</b> <b>📻</b> |
|---------------------------|-------------------------------------|--|



|          |          |
|----------|----------|
| ELEV 934 | TDZE 934 |
|----------|----------|



| CATEGORY     | A                     | B                     | C                             | D  |
|--------------|-----------------------|-----------------------|-------------------------------|----|
| LPV DA       | 1185-3/4              | 251 (300-3/4)         |                               | NA |
| LNAV/VNAV DA | 1467-1 1/2            | 533 (600-1 1/2)       |                               | NA |
| LNAV MDA     | 1520-1                | 586 (600-1)           | 1520-1 3/4<br>586 (600-1 3/4) | NA |
| CIRCLING     | 1520-1<br>586 (600-1) | 1600-1<br>666 (700-1) | 1980-3<br>1046 (1100-3)       | NA |

NE-1, 14 MAY 2026 to 11 JUN 2026

NE-1, 14 MAY 2026 to 11 JUN 2026