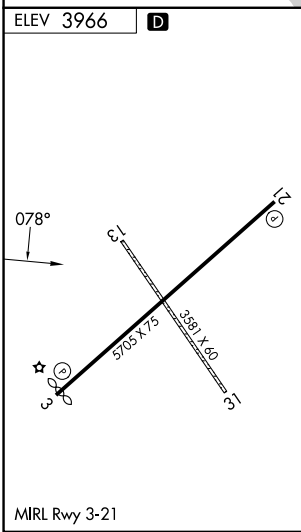
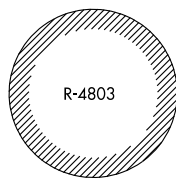
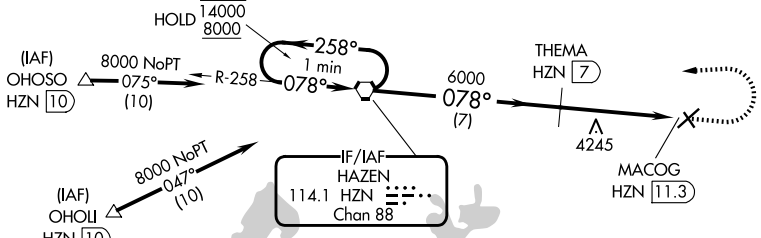
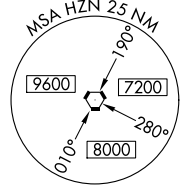


VORTAC HZN 114.1 Chan 88	APP CRS 078°	Rwy Ldg TDZE Apt Elev N/A N/A 3966
--	------------------------	--

VOR-B
FALLON MUNI (F'LX)

DME required.	MISSED APPROACH: Climb to 6100 then climbing left turn to 8000 direct HZN VORTAC and hold.
▼ Circling NA to Rwy 13 and 31. Circling to Rwy 21 NA at night. When local altimeter not received, use Fallon NAS altimeter setting.	

AWOS-AV 118.25	KNFL ATIS* 370.925	NAVY FALLON APP CON* 120.85 360.2	UNICOM 122.8 (CTAF)
--------------------------	------------------------------	---	-------------------------------



One Minute Holding Pattern	HZN VORTAC		6100	8000	HZN
	14000	8000	258°	078°	078°
			THEMATA HZN (7)	6000	MACOG HZN (11.3)
			7 NM	4.3 NM	
CATEGORY	A	B	C	D	
CIRCLING	4620-1	654 (700-1)	4620-1¾ 654 (700-1¾)	4620-2 654 (700-2)	

SW-4, 14 MAY 2026 to 11 JUN 2026

SW-4, 14 MAY 2026 to 11 JUN 2026