

ANTHM FIVE ARRIVAL (RNAV) Transition Routes

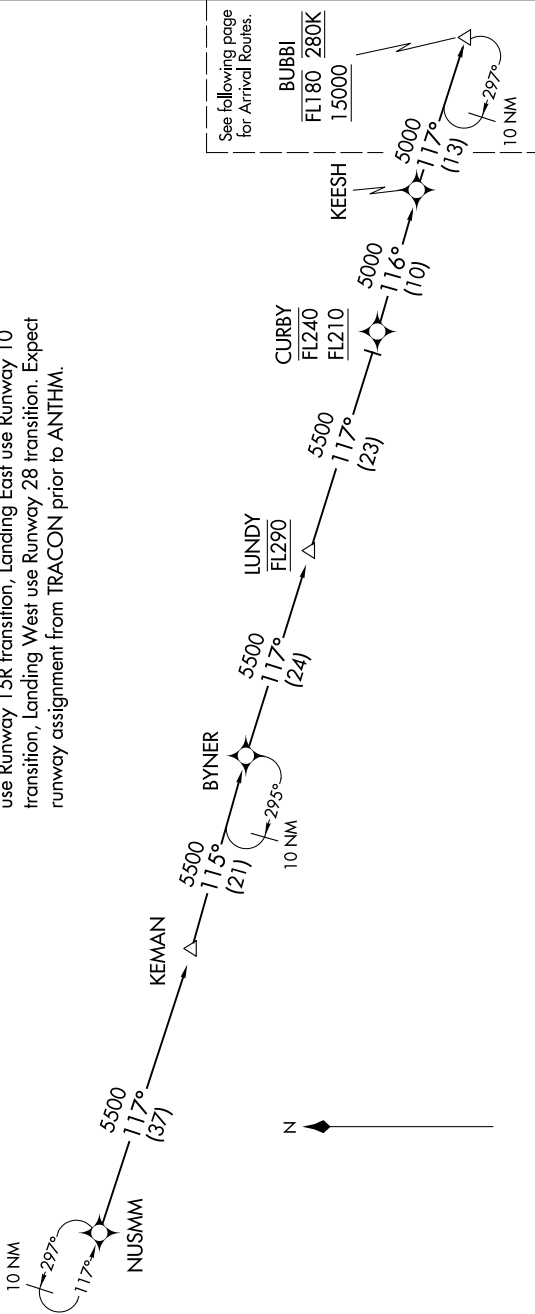
BALTIMORE, MARYLAND

NE-3, 14 MAY 2026 to 11 JUN 2026

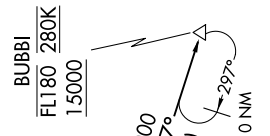
POTOMAC APP CON  
133.85 254.25  
BWI D-ATIS  
115.1 127.8  
MTN ATIS  
124.925

RNAV 1 - DME/DME/IRU or GPS.  
RADAR required.

NOTE: Jet aircraft only.  
NOTE: PROHIBITED AREA (P-56) 1.5 NM north of DCA avoid surface to 18000 MSL.  
NOTE: Landing North use Runway 33L transition, Landing South use Runway 15R transition, Landing East use Runway 10 transition, Landing West use Runway 28 transition. Expect runway assignment from TRACON prior to ANTHM.



See following page for Arrival Routes.



KEESH TRANSITION (KEESH.ANTHM5)  
KEMAN TRANSITION (KEMAN.ANTHM5)  
NUSMM TRANSITION (NUSMM.ANTHM5)

(CONTINUED ON FOLLOWING PAGES)

NOTE: Chart not to scale.

NE-3, 14 MAY 2026 to 11 JUN 2026