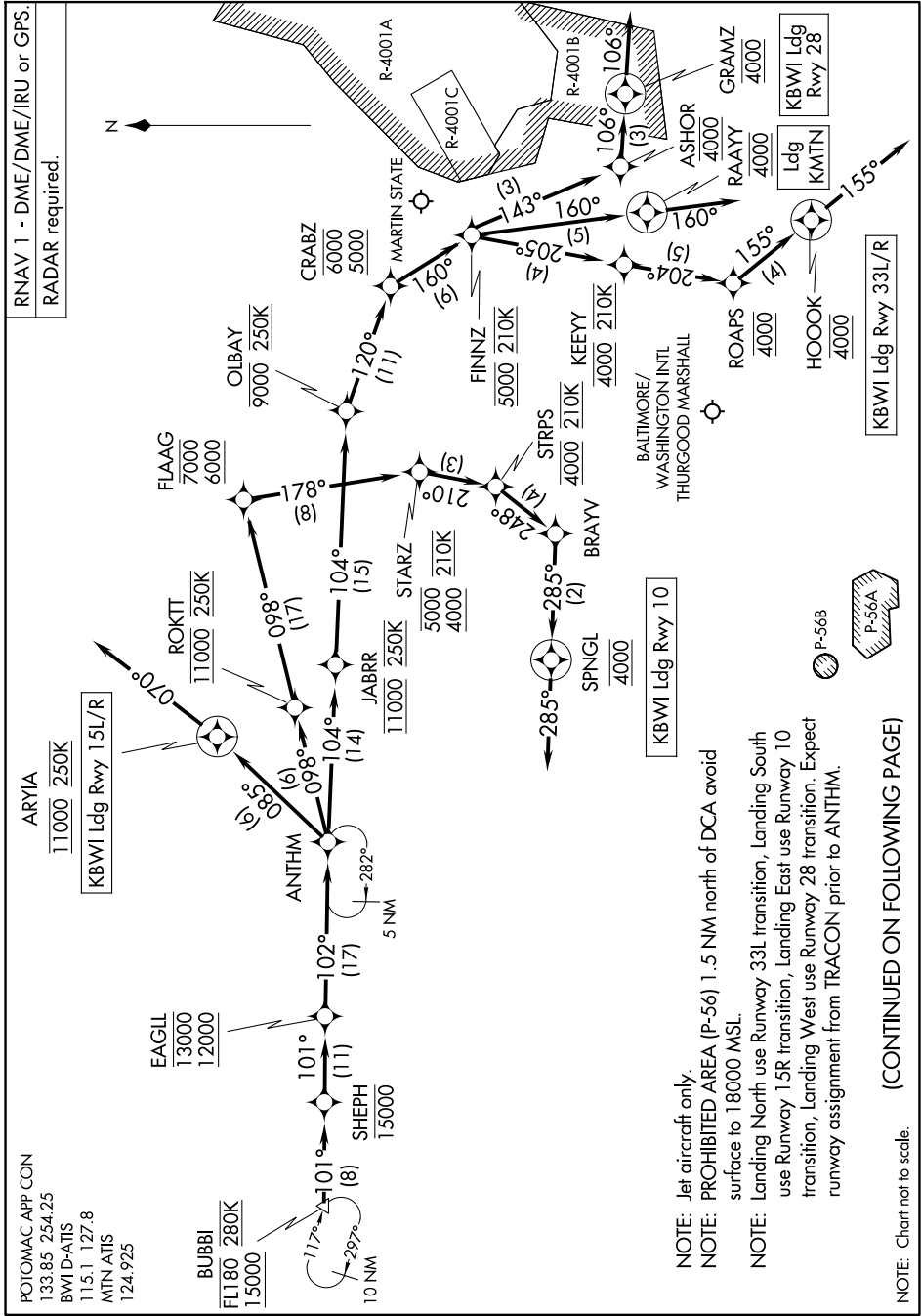


ANTHM FIVE ARRIVAL (RNAV) Arrival Routes

BALTIMORE, MARYLAND

NE-3, 14 MAY 2026 to 11 JUN 2026



ANTHM FIVE ARRIVAL (RNAV) Arrival Routes

BALTIMORE, MARYLAND

NE-3, 14 MAY 2026 to 11 JUN 2026

(CONTINUED ON FOLLOWING PAGE)

NOTE: Chart not to scale.

NOTE: Jet aircraft only.

NOTE: PROHIBITED AREA (P-56) 1.5 NM north of DCA avoid surface to 18000 MSL.

NOTE: Landing North use Runway 33L transition, Landing South use Runway 15R transition, Landing East use Runway 10 transition, Landing West use Runway 28 transition. Expect runway assignment from TRACON prior to ANTHM.