

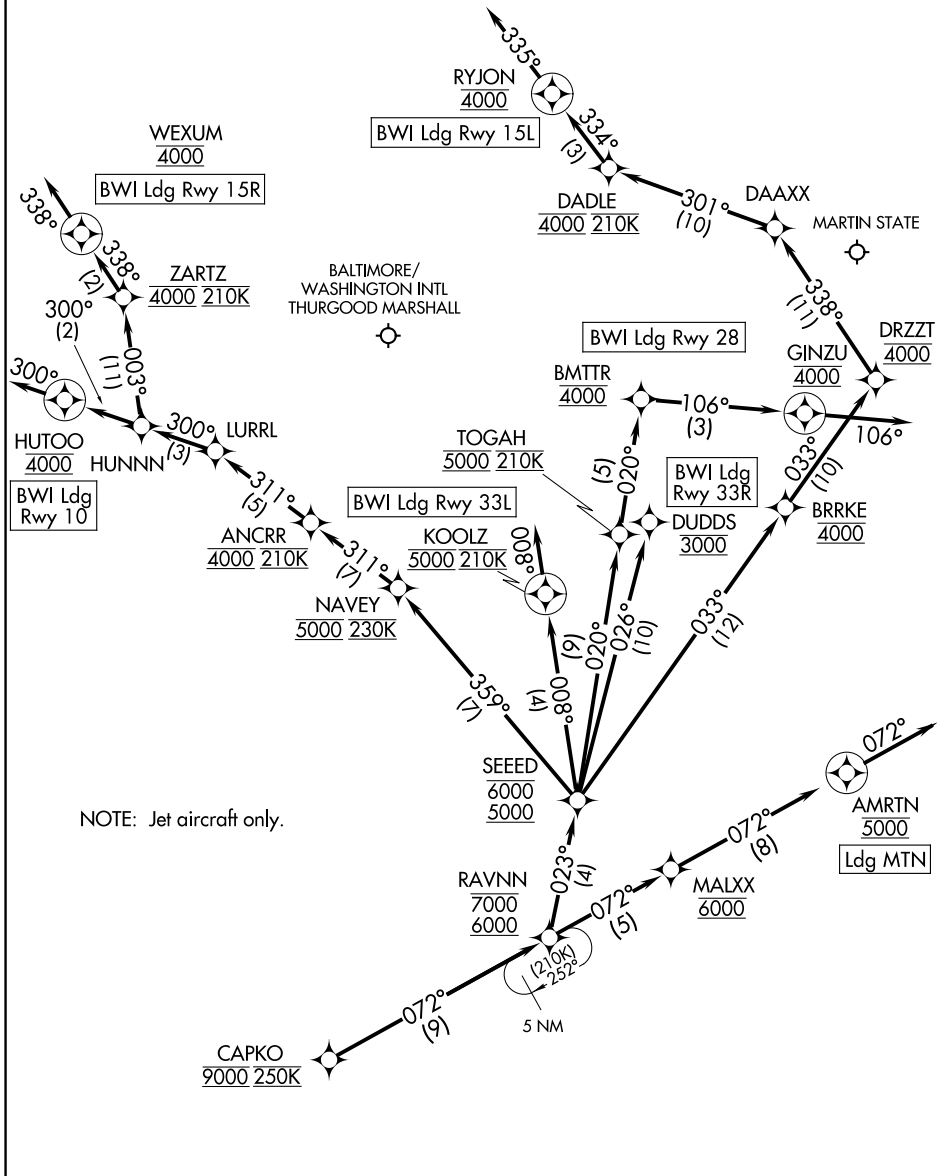
RAVNN NINE ARRIVAL (RNAV)

Arrival Routes

BALTIMORE, MARYLAND

POTOMAC APP CON
 128.35 270.275
 BWI D-ATIS
 115.1 127.8
 MTN ATIS
 124.925

RNAV 1 - DME/DME/IRU or GPS.
 RADAR required.



NE-3, 14 MAY 2026 to 11 JUN 2026

NE-3, 14 MAY 2026 to 11 JUN 2026

NOTE: Jet aircraft only.

NOTE: Chart not to scale.

(CONTINUED ON FOLLOWING PAGE)

RAVNN NINE ARRIVAL (RNAV)

Arrival Routes

BALTIMORE, MARYLAND