

JAIKE FOUR ARRIVAL (RNAV) Transition Routes

TETERBORO, NEW JERSEY

WASHINGTON CENTER
 132.52
 PHILADELPHIA APP CON
 124.35 319.15
 NEWARK APP CON
 132.8 379.9
 CDW ATIS
 135.5
 MMU ATIS
 124.25
 TEB D-ATIS
 114.2 132.85

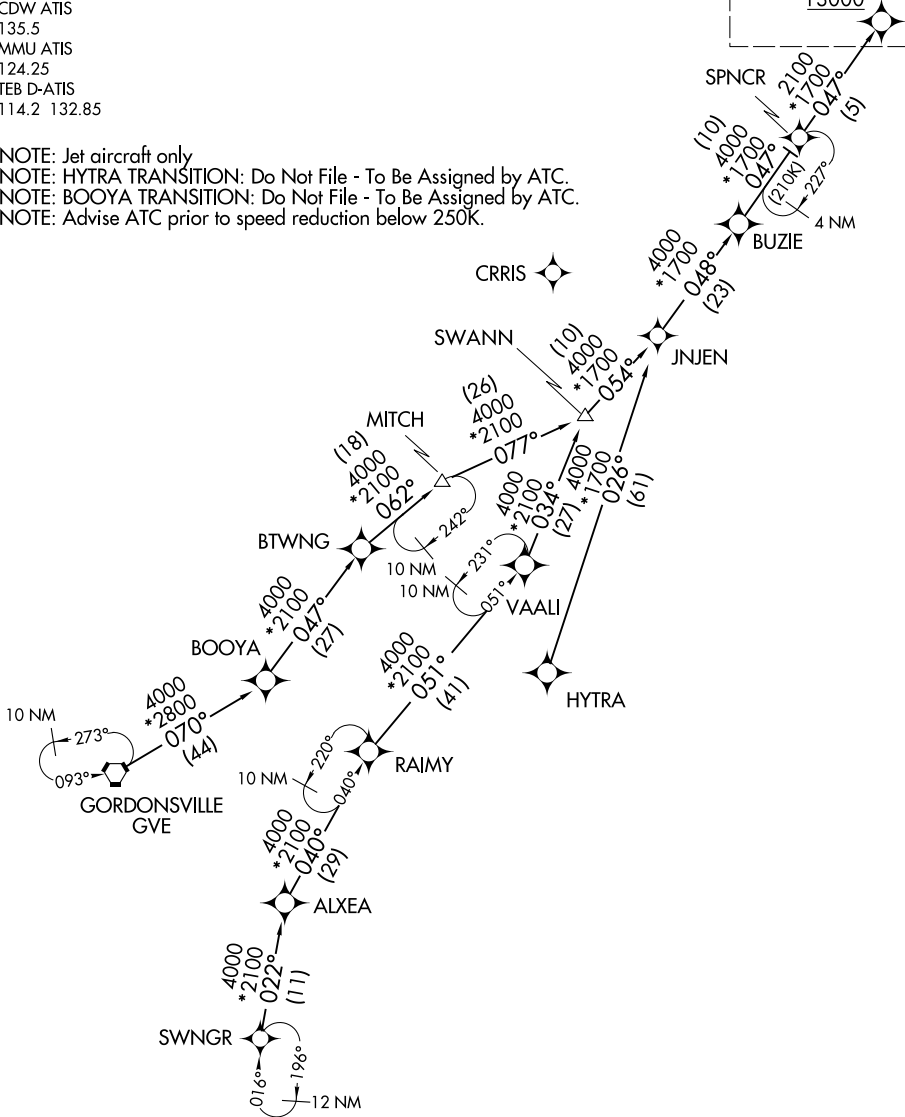
RNAV 1 - DME/DME/IRU or GPS.

RADAR required.

See following page for Arrival Routes.

JAIKE
13000

NOTE: Jet aircraft only
 NOTE: HYTRA TRANSITION: Do Not File - To Be Assigned by ATC.
 NOTE: BOOYA TRANSITION: Do Not File - To Be Assigned by ATC.
 NOTE: Advise ATC prior to speed reduction below 250K.



NE-2, 14 MAY 2026 to 11 JUN 2026

NE-2, 14 MAY 2026 to 11 JUN 2026

(CONTINUED ON FOLLOWING PAGE)

NOTE: Chart not to scale.

JAIKE FOUR ARRIVAL (RNAV) Transition Routes

TETERBORO, NEW JERSEY