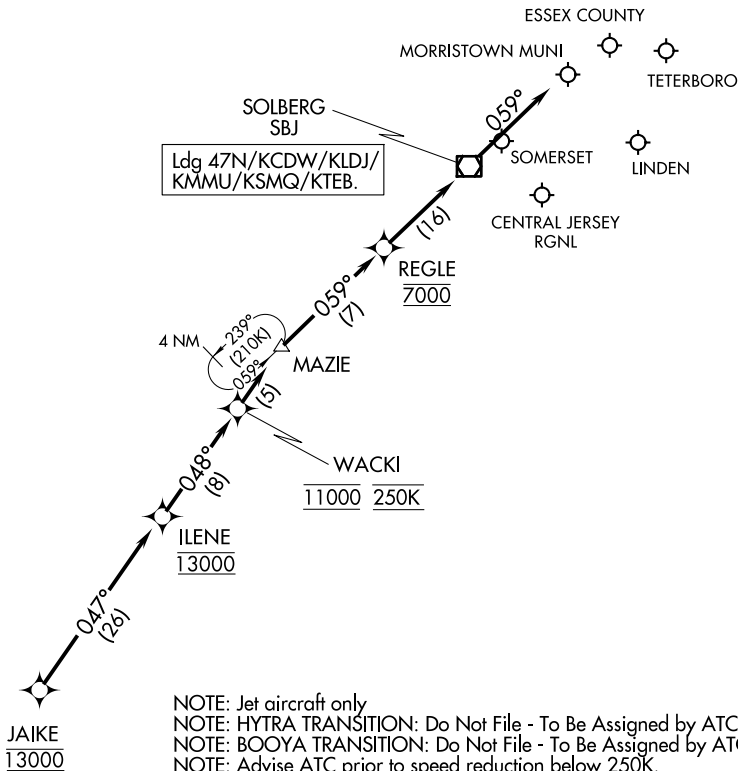


JAIKE FOUR ARRIVAL (RNAV) Arrival Routes

TETERBORO, NEW JERSEY

WASHINGTON CENTER
 132.52
 PHILADELPHIA APP CON
 124.35 319.15
 NEWARK APP CON
 132.8 379.9
 CDW ATIS
 135.5
 MMU ATIS
 124.25
 TEB D-ATIS
 114.2 132.85

RNAV 1 - DME/DME/IRU or GPS.
 RADAR required.



NOTE: Jet aircraft only
 NOTE: HYTRA TRANSITION: Do Not File - To Be Assigned by ATC.
 NOTE: BOOYA TRANSITION: Do Not File - To Be Assigned by ATC.
 NOTE: Advise ATC prior to speed reduction below 250K.

NOTE: Chart not to scale.

ARRIVAL ROUTE DESCRIPTION

- BOOYA TRANSITION (BOOYA.JAIKE4):
- GORDONSVILLE TRANSITION (GVE.JAIKE4):
- HYTRA TRANSITION (HYTRA.JAIKE4):
- SWANN TRANSITION (SWANN.JAIKE4):
- SWNGR TRANSITION (SWNGR.JAIKE4):

LANDING ALL AIRPORTS: From JAIKE on track 047° to cross ILENE at 13000, then on track 048° to cross WACKI at 11000 and at 250K, then on track 048° to MAZIE, then on track 059° to cross REGLE at 7000, then on track 059° to SBJ VOR/DME, then on track 059°. Expect RADAR vectors to final approach course.