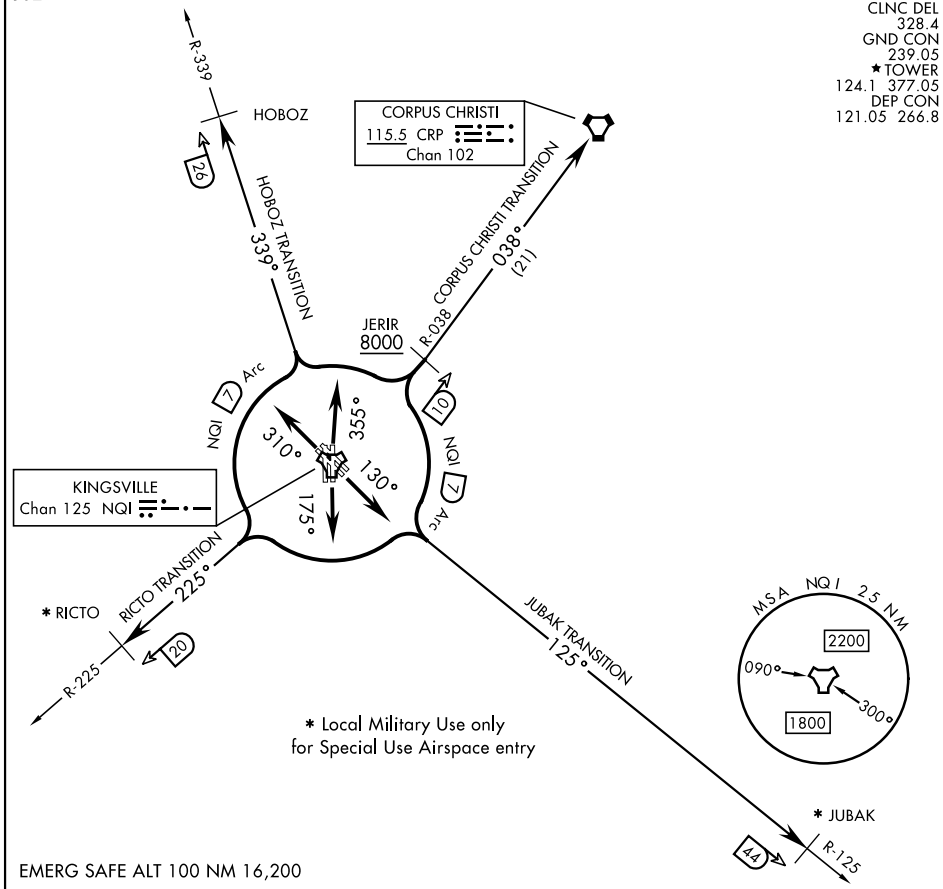


502

- ATIS ★ 282.25
- CLNC DEL 328.4
- GND CON 239.05
- ★ TOWER 124.1
- DEP CON 377.05
- 121.05 266.8



SC-3, 14 MAY 2026 to 11 JUN 2026

SC-3, 14 MAY 2026 to 11 JUN 2026

* Local Military Use only for Special Use Airspace entry

EMERG SAFE ALT 100 NM 16,200

DEPARTURE ROUTE DESCRIPTION

- TAKEOFF RWY 13L/R: Climb via heading 130° to join NQI TACAN 7 DME arc, thence...
- TAKEOFF RWY 17L/R: Climb via heading 175° to join NQI TACAN 7 DME arc, thence...
- TAKEOFF RWY 31L/R: Climb via heading 310° to join NQI TACAN 7 DME arc, thence...
- TAKEOFF RWY 35L/R: Climb via heading 355° to join NQI TACAN 7 DME arc, thence...

CORPUS CHRISTI TRANSITION (NQI4.CRP):

Rwys 13L/R and 17L/R: ...turn left to intercept NQI 7 DME arc and arc NE. Turn right to intercept NQI R-038 to cross JERIR at or above 8000. Then on NQI R-038 to CRP VORTAC.

Rwys 31L/R and 35L/R: ...turn right to intercept NQI 7 DME arc and arc NE. Turn left to intercept NQI R-038 to cross JERIR at or above 8000. Then on NQI R-038 to CRP VORTAC.

(CONTINUED ON FOLLOWING PAGE)