

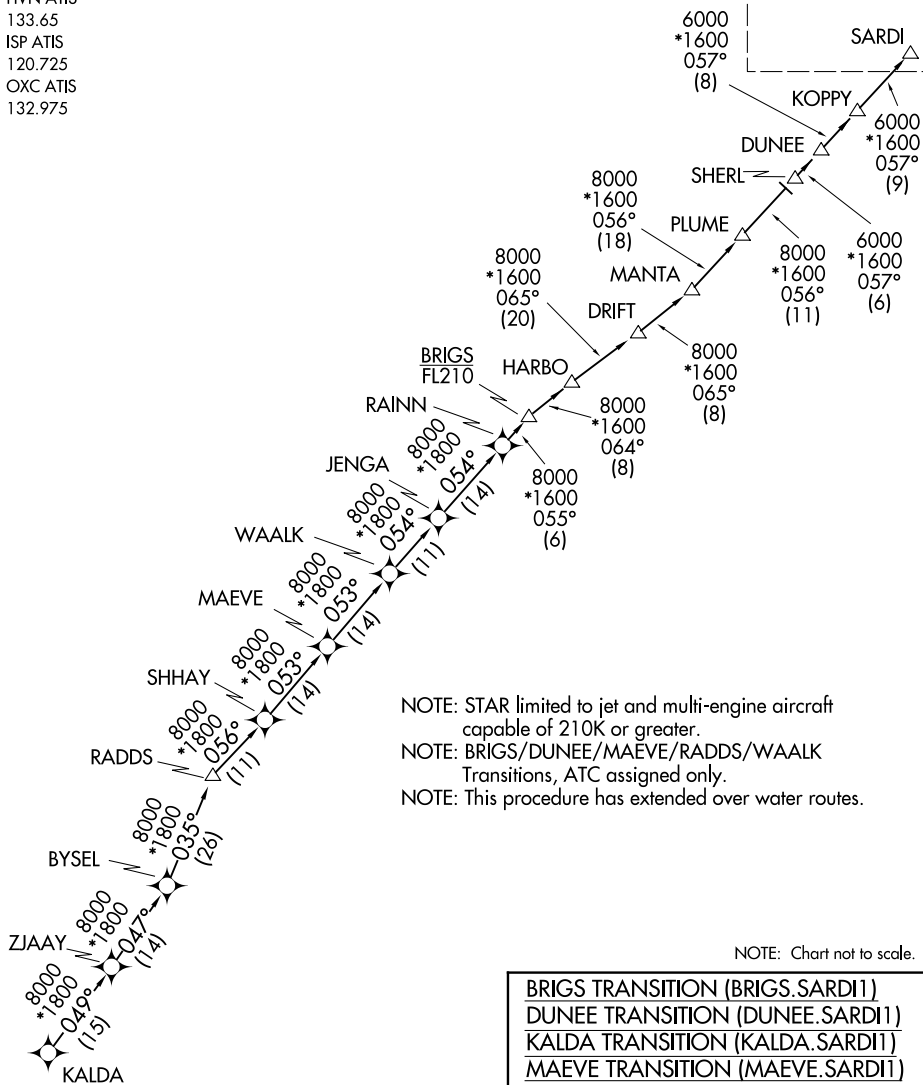
SARDI ONE ARRIVAL (RNAV) Transition Routes

NEW YORK, NEW YORK

NEW YORK APP CON
 120.05 343.75
 BDR ATIS
 119.15
 FRG ATIS
 126.65
 GON ATIS
 127.0
 HVN ATIS
 133.65
 ISP ATIS
 120.725
 OXC ATIS
 132.975

RNAV 1 - DME/DME/IRU or GPS.
 RADAR required.

See following page
 for Arrival Routes



NOTE: STAR limited to jet and multi-engine aircraft capable of 210K or greater.
 NOTE: BRIGS/DUNEE/MAEVE/RADDS/WAALK Transitions, ATC assigned only.
 NOTE: This procedure has extended over water routes.

(CONTINUED ON FOLLOWING PAGE)

BRIGS TRANSITION (BRIGS.SARDI1)
 DUNEE TRANSITION (DUNEE.SARDI1)
 KALDA TRANSITION (KALDA.SARDI1)
 MAEVE TRANSITION (MAEVE.SARDI1)
 RADDS TRANSITION (RADDS.SARDI1)
 WAALK TRANSITION (WAALK.SARDI1)

SARDI ONE ARRIVAL (RNAV) Transition Routes

NEW YORK, NEW YORK

NE-2, 14 MAY 2026 to 11 JUN 2026

NE-2, 14 MAY 2026 to 11 JUN 2026