

WAAS CH <b>61103</b> <b>W27A</b>	APP CRS <b>270°</b>	Rwy Ldg TDZE Apt Elev	<b>5998</b> <b>92</b> <b>112</b>
--	------------------------	-----------------------------	--

# RNAV (GPS) RWY 27

ESLER RGNL (E/SF)

RNP APCH-GPS.

**⚠** Circling Rwy 14, 32 NA at night. Baro-VNAV and VDP NA when using Alexandria Intl altimeter setting. For uncompensated Baro-VNAV systems, LNAV/VNAV NA below -6°C or above 54°C. When local altimeter setting not received, use Alexandria Intl altimeter setting: increase LPV DA to 327 feet; increase LNAV/VNAV DA to 457 feet and all visibility  $\frac{1}{8}$  SM; increase all MDAs 40 feet and LNAV visibility Cat C/D  $\frac{1}{8}$  SM and Circling visibility Cat D  $\frac{1}{4}$  SM. For inop MALSRR increase LNAV/VNAV all Cats visibility to 1 mile and LNAV Cat C/D visibility to  $1\frac{1}{8}$ . For inop MALSRR, when using Alexandria Intl altimeter setting, increase LNAV/VNAV all Cats visibility to 1 SM.

MALSRR

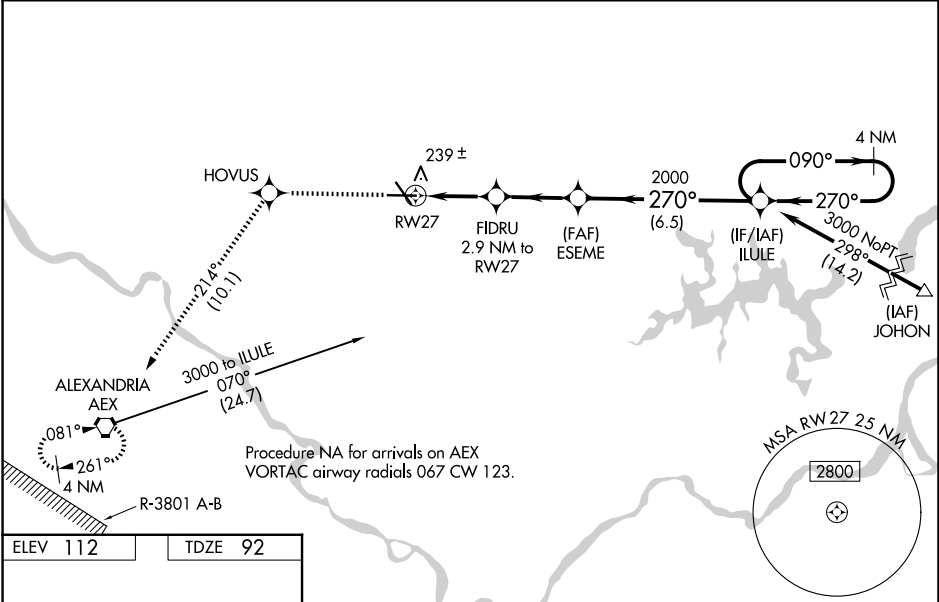


**MISSED APPROACH:**  
Climb to 3000 direct HOVUS and on track 214° to AEX VORTAC and hold.

ESF ASOS  
**119.425**

MAKS APP CON  
**125.4 254.8**

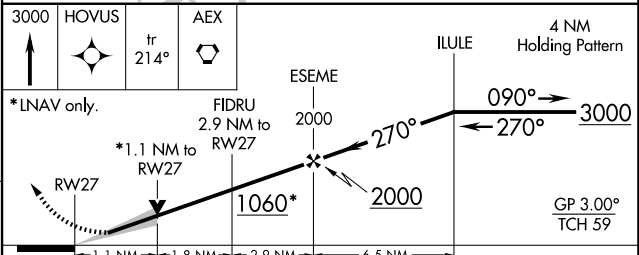
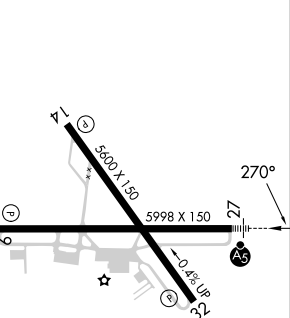
UNICOM  
**122.8** (CTAF) **1**



SC-4, 14 MAY 2026 to 11 JUN 2026

SC-4, 14 MAY 2026 to 11 JUN 2026

ELEV 112	TDZE 92
----------	---------



CATEGORY	A	B	C	D
LPV DA		292- $\frac{1}{2}$	200 (200- $\frac{1}{2}$ )	
LNAV/VNAV DA		422- $\frac{1}{2}$	330 (400- $\frac{1}{2}$ )	
LNAV MDA	500- $\frac{1}{2}$	408 (400- $\frac{1}{2}$ )	500- $\frac{3}{4}$	408 (400- $\frac{3}{4}$ )
CIRCLING	600-1	488 (500-1)	740- $1\frac{3}{4}$ 628 (700- $1\frac{3}{4}$ )	760-2 648 (700-2)

REIL Rws 9, 14 and 32 **1**  
MIRL Rwy 14-32 **1**  
HIRL Rwy 9-27 **1**