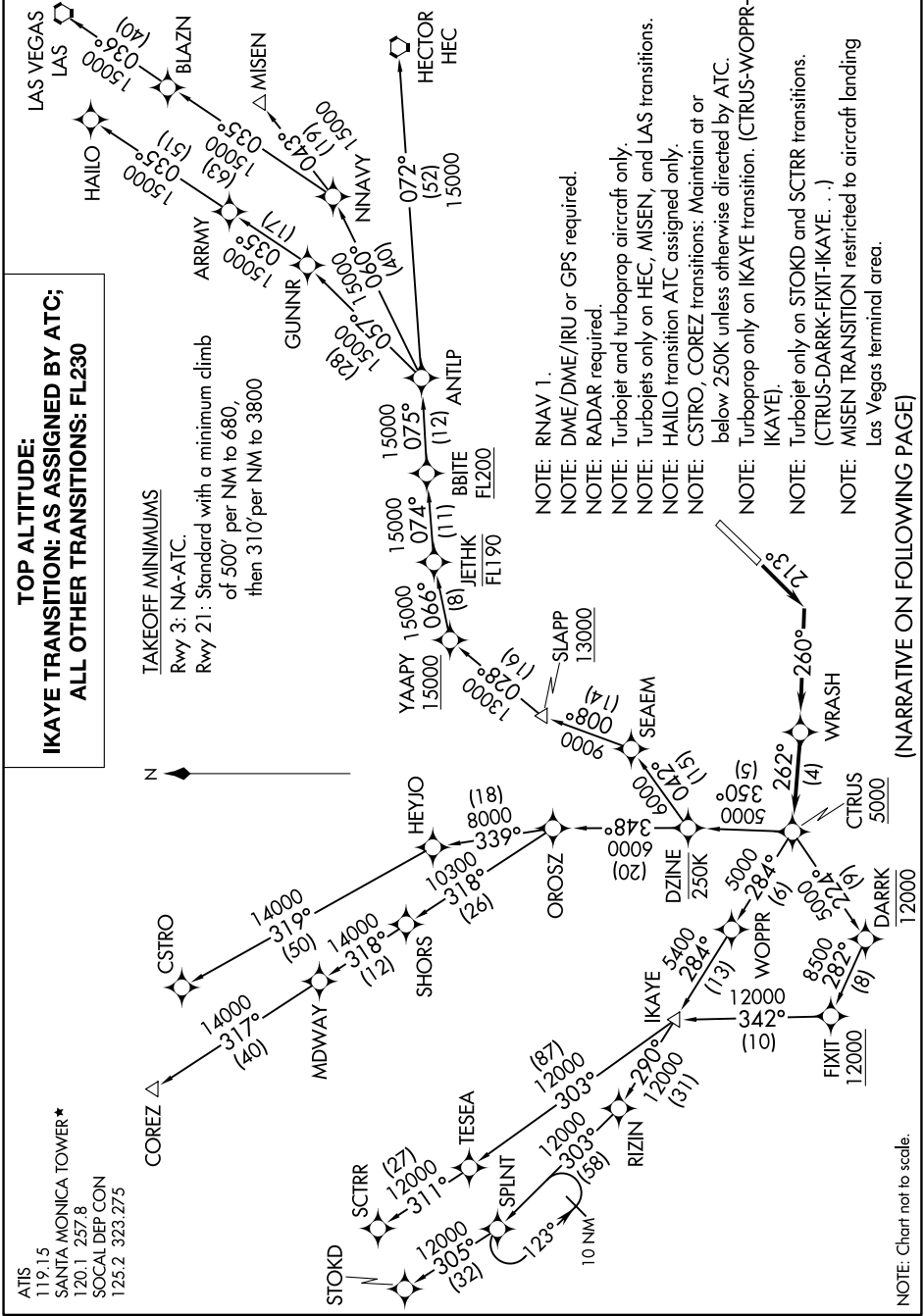


CTRUS FOUR DEPARTURE (RNAV)

AL-5023 (FAA)

SANTA MONICA MUNI (SMO)
SANTA MONICA, CALIFORNIA

SW-3, 14 MAY 2026 to 11 JUN 2026



ATIS 119.15
 SANTA MONICA TOWER* 120.1 257.8
 SOCIAL DEP CON 125.2 323.275

TAKEOFF MINIMUMS
 Rwy 3: NA-ATC.
 Rwy 21: Standard with a minimum climb of 50' per NM to 680, then 310' per NM to 3800

TOP ALTITUDE:
IKAYE TRANSITION: AS ASSIGNED BY ATC;
ALL OTHER TRANSITIONS: FL230

- NOTE: RNAV 1.
- NOTE: DME/DME/IRU or GPS required.
- NOTE: RADAR required.
- NOTE: Turbojet and turboprop aircraft only.
- NOTE: Turbojets only on HEC, MISEN, and LAS transitions.
- NOTE: HAILO transition ATC assigned only.
- NOTE: CSTR0, COREZ transitions: Maintain at or below 250K unless otherwise directed by ATC.
- NOTE: Turboprop only on IKAYE transition. (CTRUS-WOPPR- IKAYE).
- NOTE: Turbojet only on STOKD and SCTR transitions. (CTRUS-DARRK-FIXIT- IKAYE. ...)
- NOTE: MISEN TRANSITION restricted to aircraft landing Las Vegas terminal area.

(NARRATIVE ON FOLLOWING PAGE)

NOTE: Chart not to scale.

SW-3, 14 MAY 2026 to 11 JUN 2026

CTRUS FOUR DEPARTURE (RNAV)

SANTA MONICA, CALIFORNIA
SANTA MONICA MUNI (SMO)