

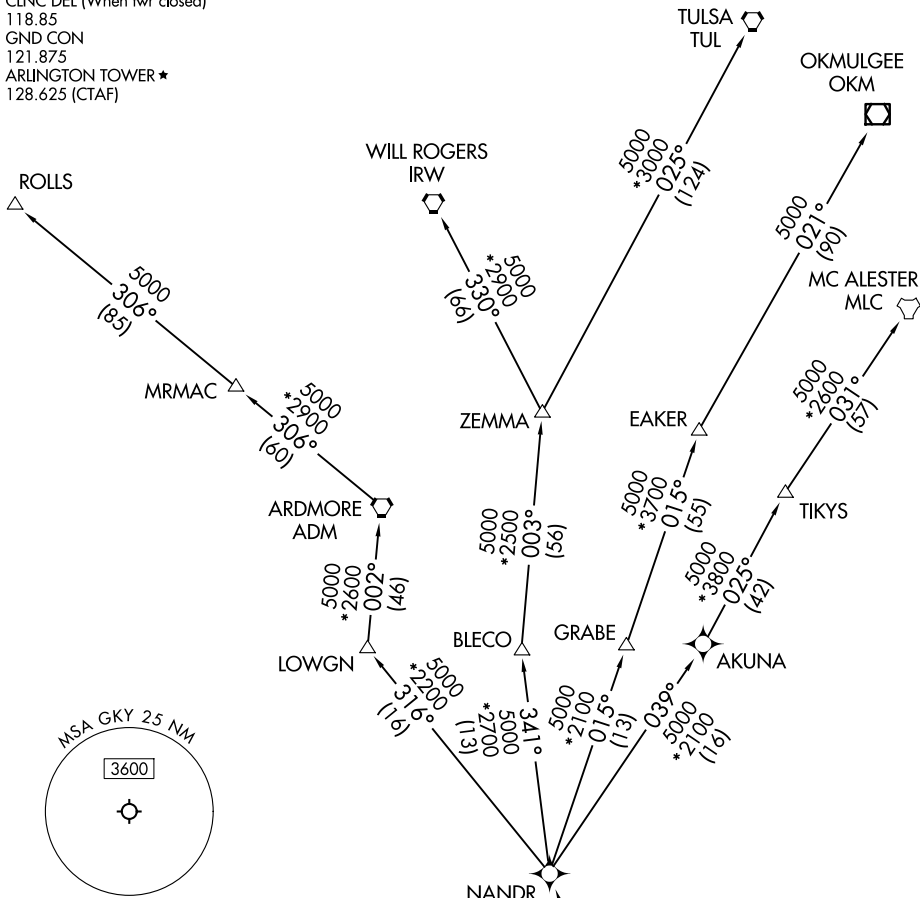
NANDR FOUR DEPARTURE (RNAV)

LONE STAR DEP CON
 135.975 379.9
 CLNC DEL
 121.875
 CLNC DEL (When twr closed)
 118.85
 GND CON
 121.875
 ARLINGTON TOWER ★
 128.625 (CTAF)

RNAV 1 - DME/DME/IRU or GPS required.

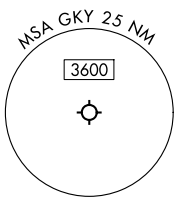
RADAR required.

**TOP ALTITUDE:
 ASSIGNED BY ATC**



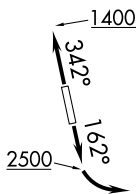
SC-2, 14 MAY 2026 to 11 JUN 2026

SC-2, 14 MAY 2026 to 11 JUN 2026



TAKEOFF MINIMUMS
 Rwy's 16, 34: Standard.

- NOTE: EAKER Transition: For TUL terminal arrivals only.
- NOTE: TULSA Transition: For all aircraft overflying TUL VORTAC.
- NOTE: Aircraft arriving to the Oklahoma City terminal area, file and expect the ZEMMA enroute transition.



NOTE: Chart not to scale.

(CONTINUED ON FOLLOWING PAGE)

NANDR FOUR DEPARTURE (RNAV)