

WAAS CH 99636 W34A	APP CRS 342°	Rwy Ldg TDZE Apt Elev	4002 820 821
--	------------------------	-----------------------------	---

RNAV (GPS) RWY 34

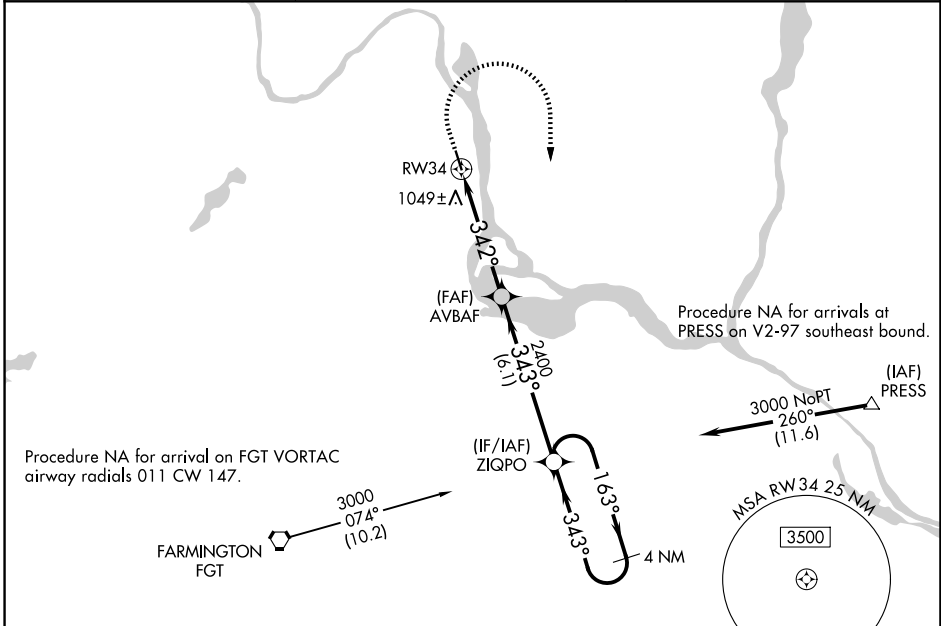
SOUTH ST PAUL MUNI/RICHARD E FLEMING FLD (SGS)

RNP APCH - GPS.

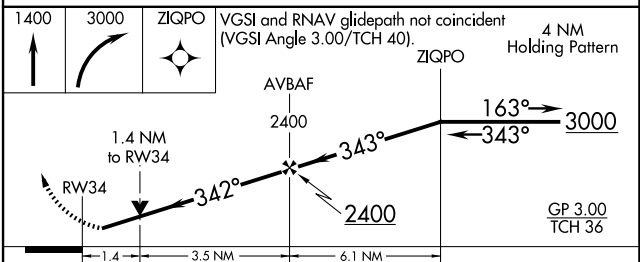
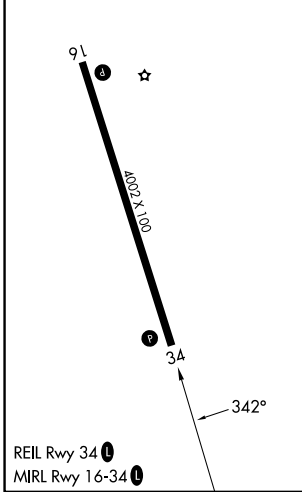
▼ For uncompensated Baro-VNAV systems, LNAV-VNAV
 ▲ NA below -22°C or above 54°C. Rwy 34 helicopter
 visibility reduction below ¾ SM NA.

MISSED APPROACH: Climb to 1400 then climbing
 right turn to 3000 direct ZIQPO and hold.

AWOS-3 119.425	MINNEAPOLIS APP CON 121.2 335.65	UNICOM 122.7 (CTAF) 0
--------------------------	--	---------------------------------



ELEV 821	TDZE 820
----------	----------



CATEGORY	A	B	C	D
LPV DA		1102-1	282 (300-1)	
LNAV/VNAV DA		1378-1½	558 (600-1½)	
LNAV MDA	1300-1	480 (500-1)	1300-1½	480 (500-1½)
CIRCLING	1400-1 579 (600-1)	1540-1 719 (800-1)	1540-2 719 (800-2)	1620-2 ½ 799 (800-2½)

NC-1, 14 MAY 2026 to 11 JUN 2026

NC-1, 14 MAY 2026 to 11 JUN 2026