

# LINDBERGH NINE DEPARTURE


AL-5316 (FAA)

ST LOUIS DOWNTOWN (CPS)  
CAHOKIA/ST. LOUIS, ILLINOIS

ST LOUIS DEP CON  
123.7 371.875  
ATIS  
121.45  
CLNC DEL  
118.275  
CLNC DEL  
121.8 (when twr closed)  
GND CON  
121.8  
DOWNTOWN TOWER\*  
119.925 379.3

DME and RADAR required.

**TOP ALTITUDE:  
ASSIGNED BY ATC**


ST. LOUIS  
117.4 STL   
Chan 121

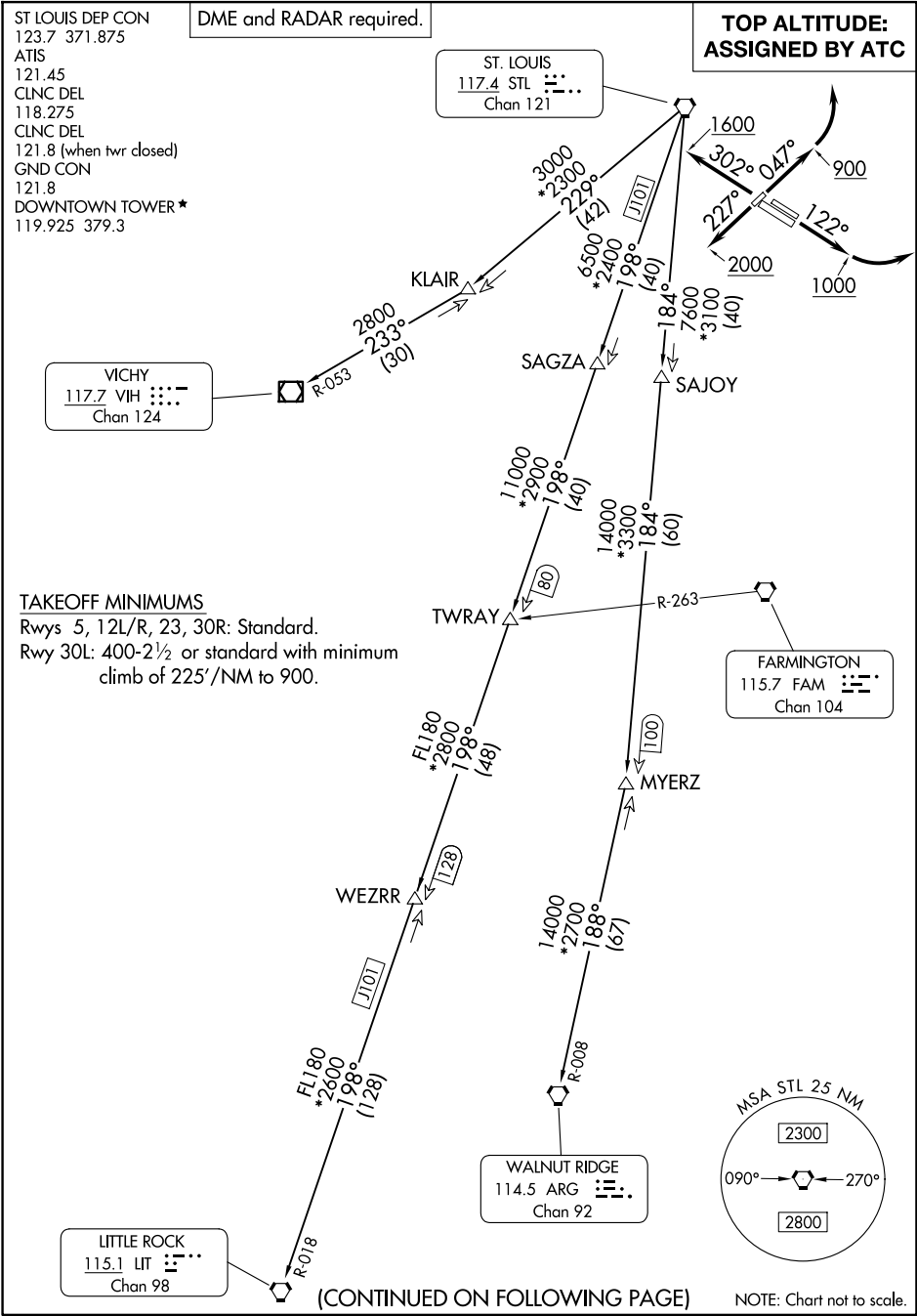
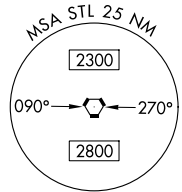
VICHY  
117.7 VIH   
Chan 124

### TAKEOFF MINIMUMS

Rwys 5, 12L/R, 23, 30R: Standard.  
Rwy 30L: 400-2½ or standard with minimum  
climb of 225'/NM to 900.

LITTLE ROCK  
115.1 LIT   
Chan 98

WALNUT RIDGE  
114.5 ARG   
Chan 92



(CONTINUED ON FOLLOWING PAGE)

NOTE: Chart not to scale.

# LINDBERGH NINE DEPARTURE