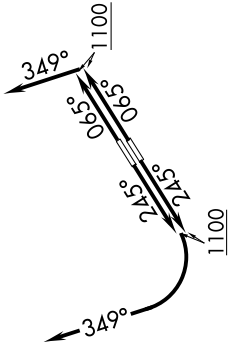


GTLKE FIVE DEPARTURE (RNAV)

BURKE LAKEFRONT (BKL)
CLEVELAND, OHIO

**TOP ALTITUDE:
ASSIGNED BY ATC**

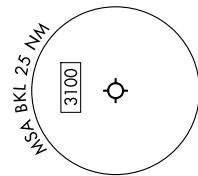


TAKEOFF MINIMUMS:

Rwys 6L, 24R: Standard with minimum climb of 500' per NM to 1100.

Rwys 6R: Standard with minimum climb of 500' per NM to 1100. NA when control tower closed.

Rwy 24L: 400-1 $\frac{1}{2}$ or standard with minimum climb of 757' per NM to 1000. NA when control tower closed.

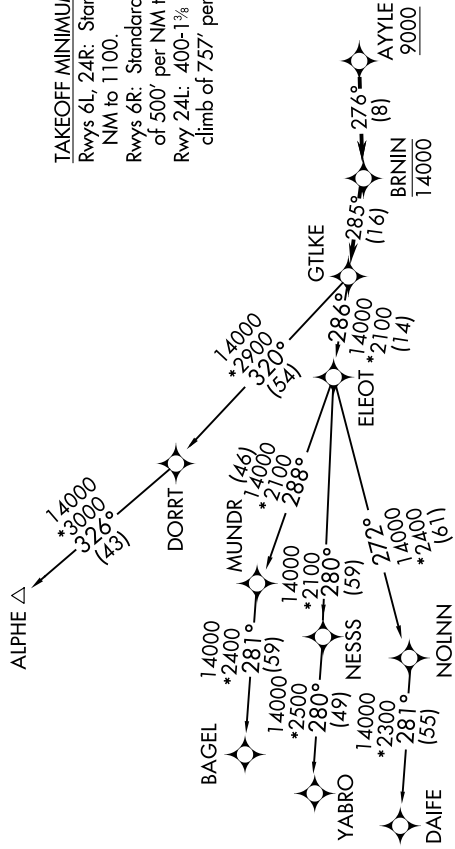


EC-2, 14 MAY 2026 to 11 JUN 2026

RNAV 1 - DME/DME/IRU or GPS.
RADAR required.

CLEVELAND DEP CON
125.35 346.325
ATIS
125.25
CINC DEL
339.8
121.9 (when hvr closed)
GND CON
121.9 339.8
LAKEFRONT TOWER ★
124.3 (CTAF) 339.8

NOTE: Rwy 6R/24L: Takeoff minimums NA when control tower closed.



(CONTINUED ON FOLLOWING PAGE)

NOTE: Chart not to scale.

EC-2, 14 MAY 2026 to 11 JUN 2026

GTLKE FIVE DEPARTURE (RNAV)

CLEVELAND, OHIO
BURKE LAKEFRONT (BKL)