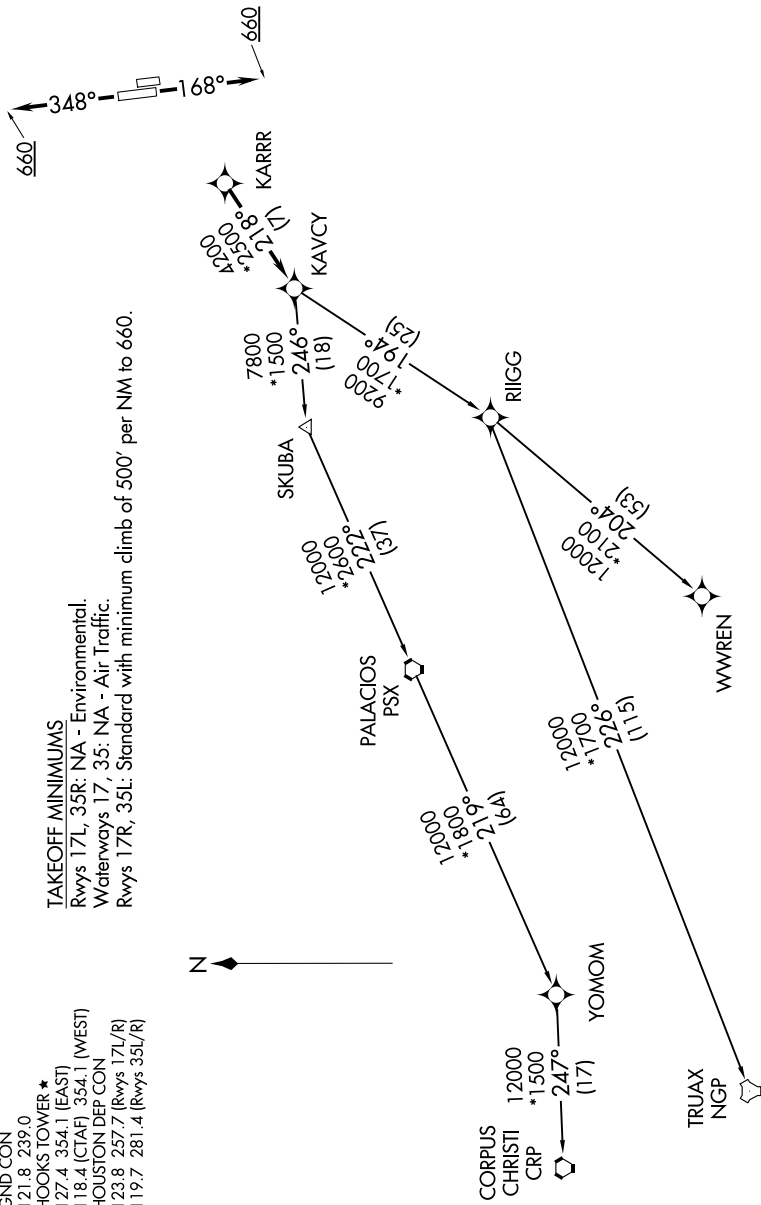


# KARRR SEVEN DEPARTURE (RNAV)

**TOP ALTITUDE:  
ASSIGNED BY ATC**



SC-5, 14 MAY 2026 to 11 JUN 2026

RNAV-1 DME/DME/IRU or GPS.
RADAR required.

### TAKEOFF MINIMUMS

Rwys 17L, 35R: NA - Environmental.  
 Waterways 17, 35: NA - Air Traffic.  
 Rwys 17R, 35L: Standard with minimum climb of 500' per NM to 660.

ATIS 128.375  
 CINC DEL 119.45  
 GND CON 121.8 239.0  
 HOOKS TOWER\* 127.4 354.1 (EAST)  
 118.4 (CTAF) 354.1 (WEST)  
 HOUSTON DEP CON 123.8 257.7 (Rwys 17L/R)  
 119.7 281.4 (Rwys 35L/R)

NOTE: Chart not to scale.

(NARRATIVE ON FOLLOWING PAGE)

SC-5, 14 MAY 2026 to 11 JUN 2026