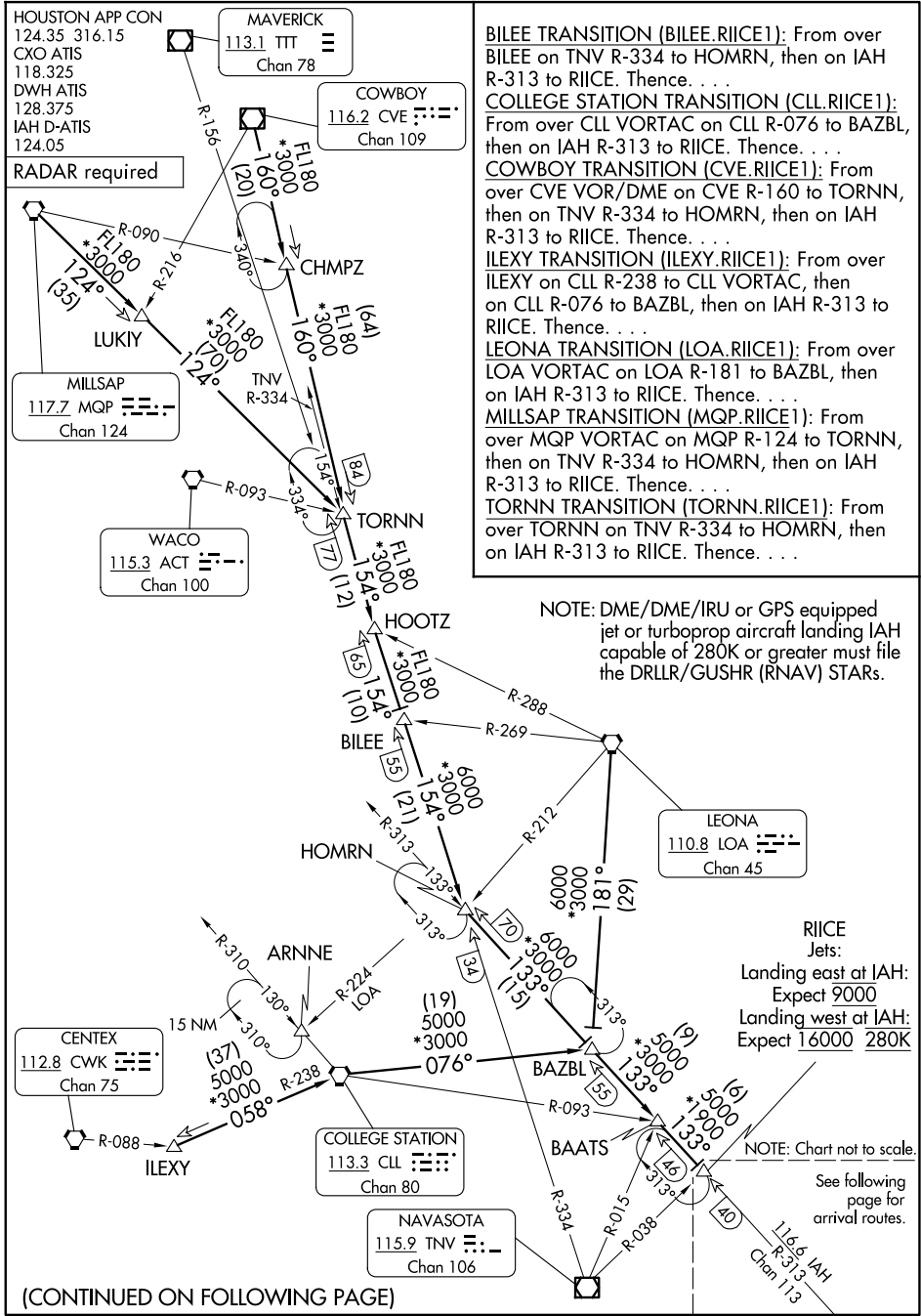


# RIICE ONE ARRIVAL

## Transition Routes

HOUSTON, TEXAS



**BILEE TRANSITION (BILEE.RIICE1):** From over BILEE on TNV R-334 to HOMRN, then on IAH R-313 to RIICE. Thence. . . .

**COLLEGE STATION TRANSITION (CLL.RIICE1):** From over CLL VORTAC on CLL R-076 to BAZBL, then on IAH R-313 to RIICE. Thence. . . .

**COWBOY TRANSITION (CVE.RIICE1):** From over CVE VOR/DME on CVE R-160 to TORNN, then on TNV R-334 to HOMRN, then on IAH R-313 to RIICE. Thence. . . .

**ILEXY TRANSITION (ILEXY.RIICE1):** From over ILEXY on CLL R-238 to CLL VORTAC, then on CLL R-076 to BAZBL, then on IAH R-313 to RIICE. Thence. . . .

**LEONA TRANSITION (LOA.RIICE1):** From over LOA VORTAC on LOA R-181 to BAZBL, then on IAH R-313 to RIICE. Thence. . . .

**MILLSAP TRANSITION (MQP.RIICE1):** From over MQP VORTAC on MQP R-124 to TORNN, then on TNV R-334 to HOMRN, then on IAH R-313 to RIICE. Thence. . . .

**TORNN TRANSITION (TORNN.RIICE1):** From over TORNN on TNV R-334 to HOMRN, then on IAH R-313 to RIICE. Thence. . . .

NOTE: DME/DME/IRU or GPS equipped jet or turboprop aircraft landing IAH capable of 280K or greater must file the DRLR/GUSHR (RNAV) STARS.

RIICE  
Jets:  
Landing east at IAH:  
Expect 9000  
Landing west at IAH:  
Expect 16000 280K

NOTE: Chart not to scale.  
See following page for arrival routes.

SC-5, 14 MAY 2026 to 11 JUN 2026

SC-5, 14 MAY 2026 to 11 JUN 2026

(CONTINUED ON FOLLOWING PAGE)

# RIICE ONE ARRIVAL

## Transition Routes

HOUSTON, TEXAS