

**TOP ALTITUDE:
ASSIGNED BY ATC**

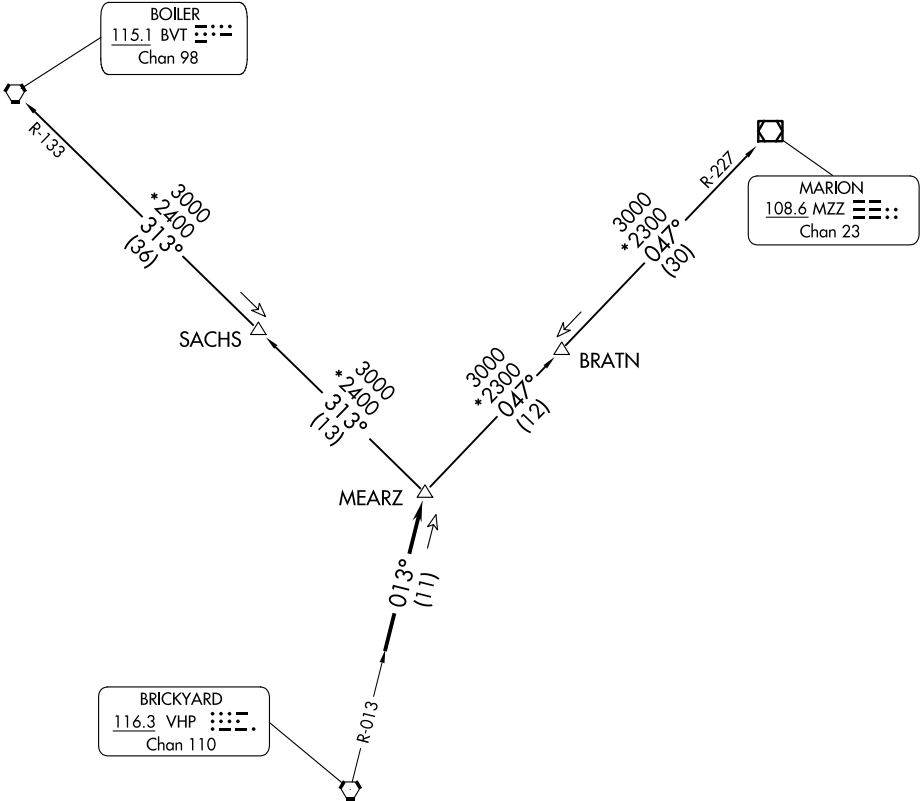
RADAR required.

ASOS
121.55
INDIANAPOLIS DEP CON
127.15 317.8

BOILER
115.1 BVT
Chan 98

MARION
108.6 MZZ
Chan 23

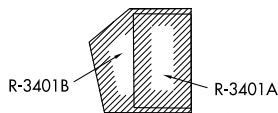
BRICKYARD
116.3 VHP
Chan 110



TAKEOFF MINIMUMS

Rwy 1, 19: Standard.
Rwy 9, 27: NA - Environmental

- NOTE: Turbojets accelerate to 250K until reaching 10000, if unable advise ATC.
- NOTE: Assigned to aircraft with a requested altitude of 11000 or above.
- NOTE: Select appropriate localizer/DME frequency/channel prior to departure.



NOTE: Chart not to scale.

(NARRATIVE ON FOLLOWING PAGE)

EC-2, 14 MAY 2026 to 11 JUN 2026

EC-2, 14 MAY 2026 to 11 JUN 2026