

BORRN SIX DEPARTURE (RNAV)

HOUSTON, TEXAS

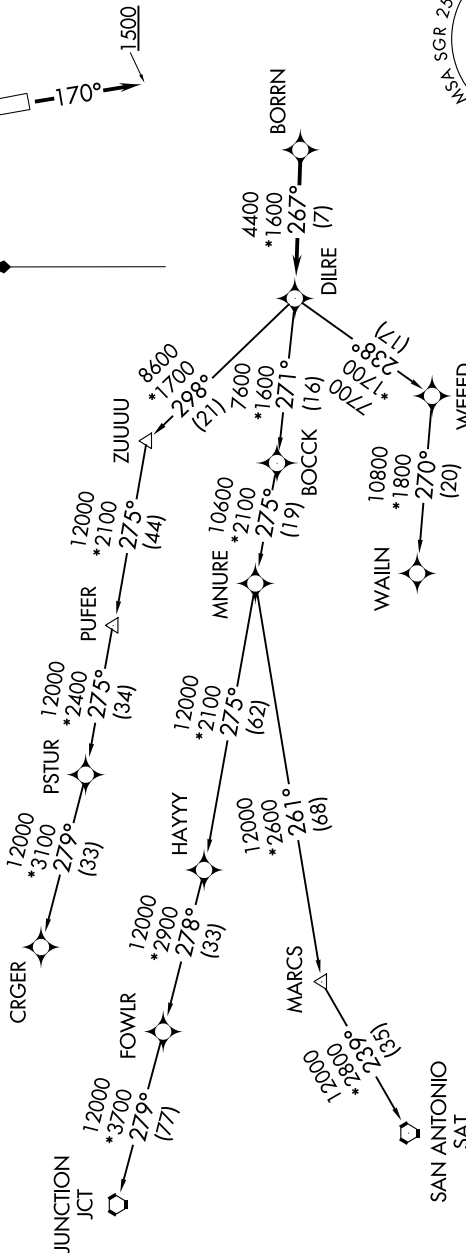
TOP ALTITUDE:  
ASSIGNED BY ATC

RNAV 1 - DME/DME/IRU or GPS.  
RADAR required.

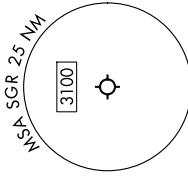
SC-5, 14 MAY 2026 to 11 JUN 2026

ATIS 118.125  
CLNC DEL 121.4  
CLNC DEL (When twr closed) 119.25  
GND CON 121.4  
SUGAR LAND TOWER\* 118.65 (CTAF)  
HOUSTON DEP CON 123.8 257.7

TAKEOFF MINIMUMS  
Rwys 17, 35: Standard with minimum  
climb of 500'/NM to 600.



NOTE: CRGR-TRANSITION ATC assigned only  
for aircraft departing 54T, AXH, EFD, GLS,  
HPY, IWS, LBX, LVJ, SGR, TME, T00, T41.



NOTE: Chart not to scale.

(CONTINUED ON FOLLOWING PAGE)

SC-5, 14 MAY 2026 to 11 JUN 2026

BORRN SIX DEPARTURE (RNAV)

HOUSTON, TEXAS

SUGAR LAND RGNL (SGR)