

# KARRR SEVEN DEPARTURE (RNAV)

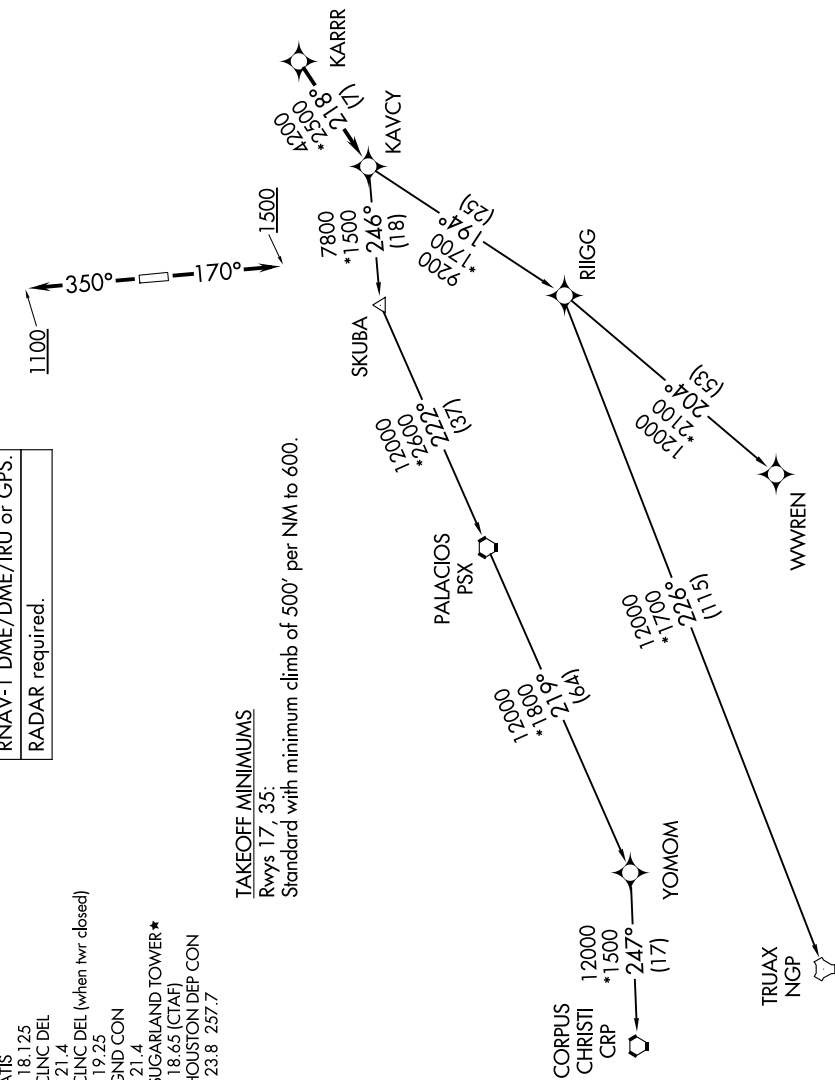
**TOP ALTITUDE:  
ASSIGNED BY ATC**

RNAV-1 DME/DME/IRU or GPS.  
RADAR required.

ATIS 118.125  
CLNC DEL 121.4  
CLNC DEL (when hwr closed) 119.25  
GND CON 121.4  
SUGARLAND TOWER\* 118.65 (CTAF)  
HOUSTON DEP CON 123.8 257.7

**TAKEOFF MINIMUMS**

Rwys 17, 35:  
Standard with minimum climb of 500' per NM to 600.



(CONTINUED ON FOLLOWING PAGE)

NOTE: Chart not to scale.

# KARRR SEVEN DEPARTURE (RNAV)