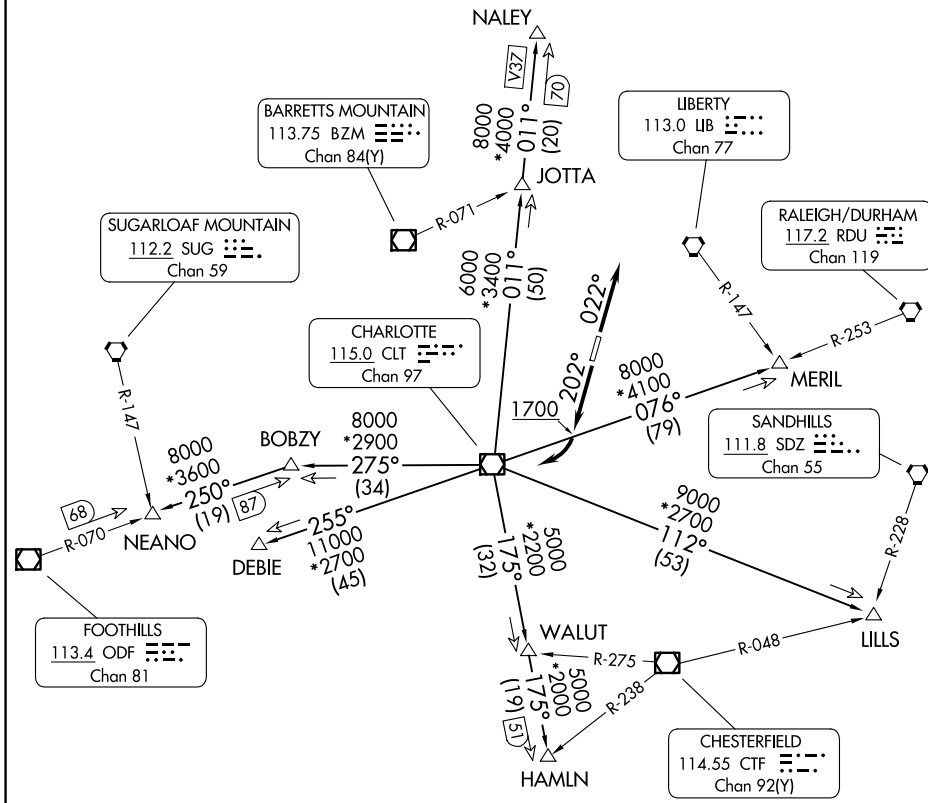


KERMIT FIVE DEPARTURE

CHARLOTTE DEP CON
128.325 307.8
AWOS-3P
118.175
CLNC DEL
127.35

RADAR and DME required.

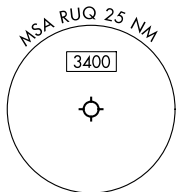
**TOP ALTITUDE:
3000**



NOTE: Turbojets only.
 NOTE: Upon reaching 10000 MSL, accelerate to and maintain 280K,
 if unable advise ATC.
 NOTE: Transponder code will be issued via Charlotte clearance delivery.

TAKEOFF MINIMUMS

Rwy 2: Standard.
 Rwy 20: 400-2¾ or standard with minimum climb of 205'/NM to 1300, or
 alternatively, with standard takeoff minimums and a normal 200'/NM climb
 gradient, takeoff must occur no later than 1200' prior to DER.



NOTE: Chart not to scale.

(CONTINUED ON FOLLOWING PAGE)

KERMIT FIVE DEPARTURE

(KER5.KER) 14MAY26

SALISBURY, NORTH CAROLINA
MID-CAROLINA RGNL (RUQ)

SE-2, 14 MAY 2026 to 11 JUN 2026

SE-2, 14 MAY 2026 to 11 JUN 2026