

KNIGHTS FOUR DEPARTURE

CHARLOTTE DEP CON
128.325 307.8
AWOS-3P
118.175
CLNC DEL
127.35

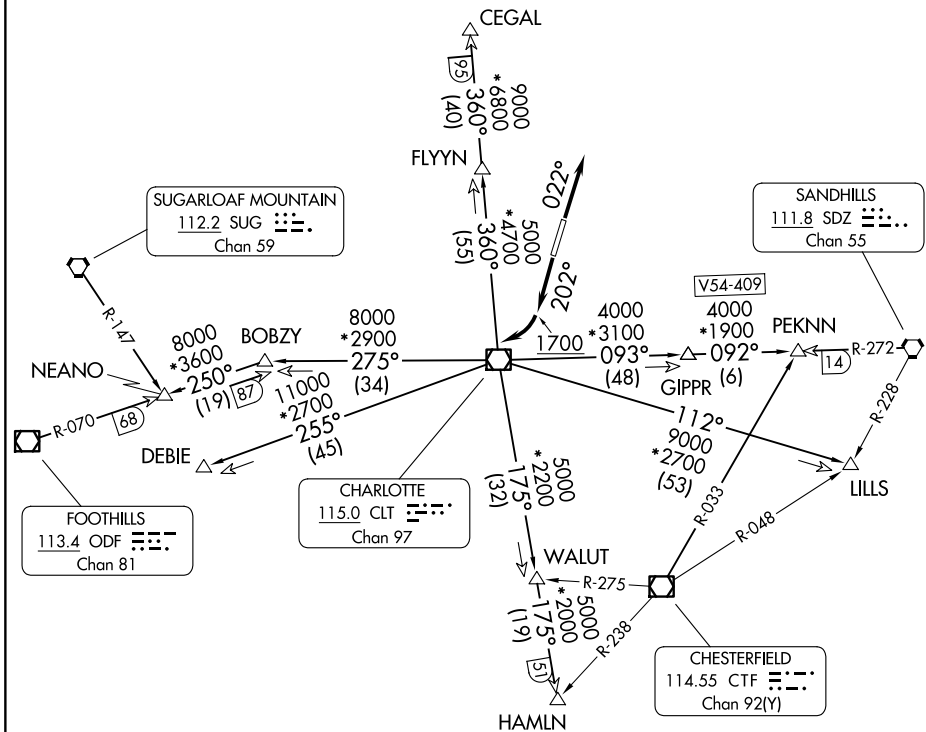
RADAR and DME required.

**TOP ALTITUDE:
3000**

TAKEOFF MINIMUMS

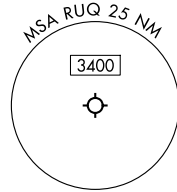
Rwy 2: Standard.

Rwy 20: 400-2¾ or standard with minimum climb of 205'/NM to 1300, or alternatively, with standard takeoff minimums and a normal 200'/NM climb gradient, takeoff must occur no later than 1200' prior to DER.



SE-2, 14 MAY 2026 to 11 JUN 2026

SE-2, 14 MAY 2026 to 11 JUN 2026



- NOTE: Props only.
- NOTE: Turboprops: Operate in a manner that will result in best forward speed and climb rate.
- NOTE: Transponder code will be issued via Charlotte clearance delivery.

(CONTINUED ON FOLLOWING PAGE)

NOTE: Chart not to scale.

KNIGHTS FOUR DEPARTURE