

(HENCE1 .HENCE) 24249

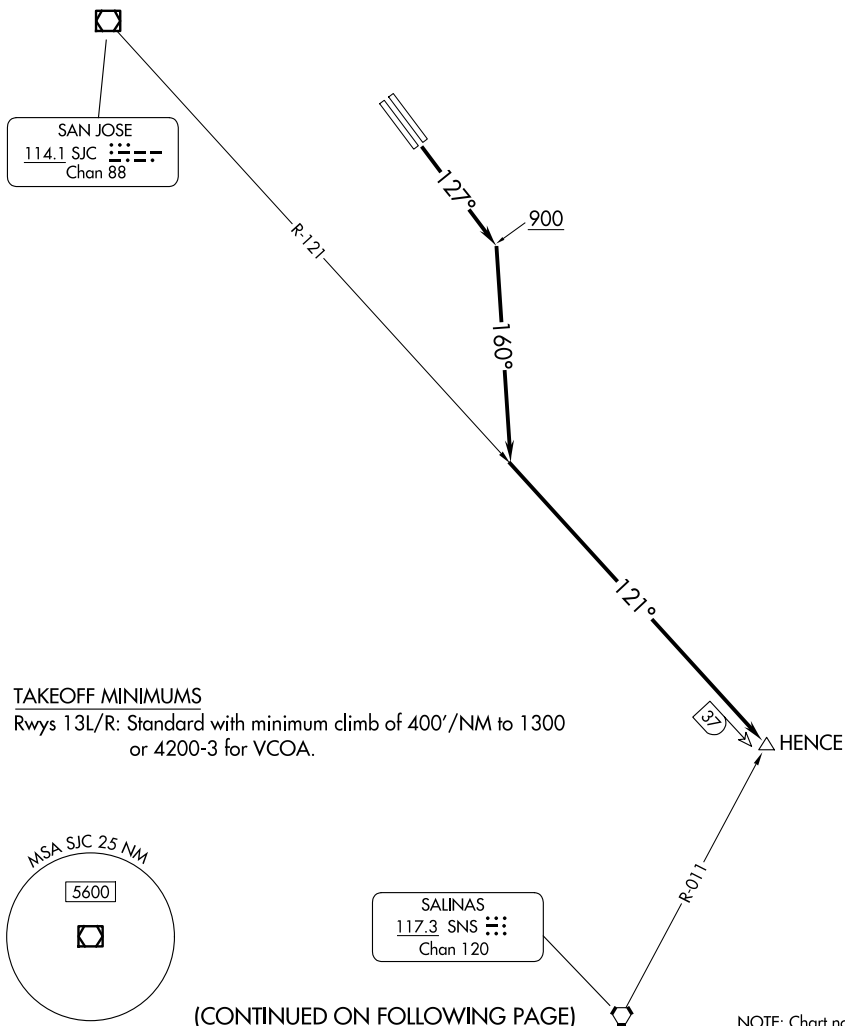
HENCE ONE DEPARTURE (OBSTACLE)

REID-HILLVIEW OF SANTA CLARA COUNTY (R.H.V)

AL-5591 (FAA)

SAN JOSE, CALIFORNIA

NORCAL DEP CON
121.3 270.35



SW-2, 14 MAY 2026 to 11 JUN 2026

SW-2, 14 MAY 2026 to 11 JUN 2026

DEPARTURE ROUTE DESCRIPTION

TAKEOFF RUNWAYS 13L/R: Climb on heading 127° to 900, then climbing right turn to heading 160° to intercept SJC VOR/DME R-121 to HENCE.

VCOA RUNWAYS 13L/R: Obtain ATC approval for VCOA when requesting IFR clearance. Climb in visual conditions to cross Reid-Hillview of Santa Clara County Airport at or above 4200 before proceeding on course.

HENCE ONE DEPARTURE (OBSTACLE)

(HENCE1 .HENCE) 05SEP24

SAN JOSE, CALIFORNIA

REID-HILLVIEW OF SANTA CLARA COUNTY (R.H.V)