

(TERPZ8.TERPZ) 24193

AL-5596 (FAA)

EASTON/NEWNAM FLD (ESN)

# TERPZ EIGHT DEPARTURE (RNAV)

EASTON, MARYLAND

POTOMAC DEP CON  
 133.75 254.35  
 ATIS  
 124.475  
 CLNC DEL  
 119.075  
 GND CON  
 119.075  
 EASTON TOWER \*  
 118.525 (CTAF)

RNAV 1 - DME/DME/IRU or GPS.

RADAR required.

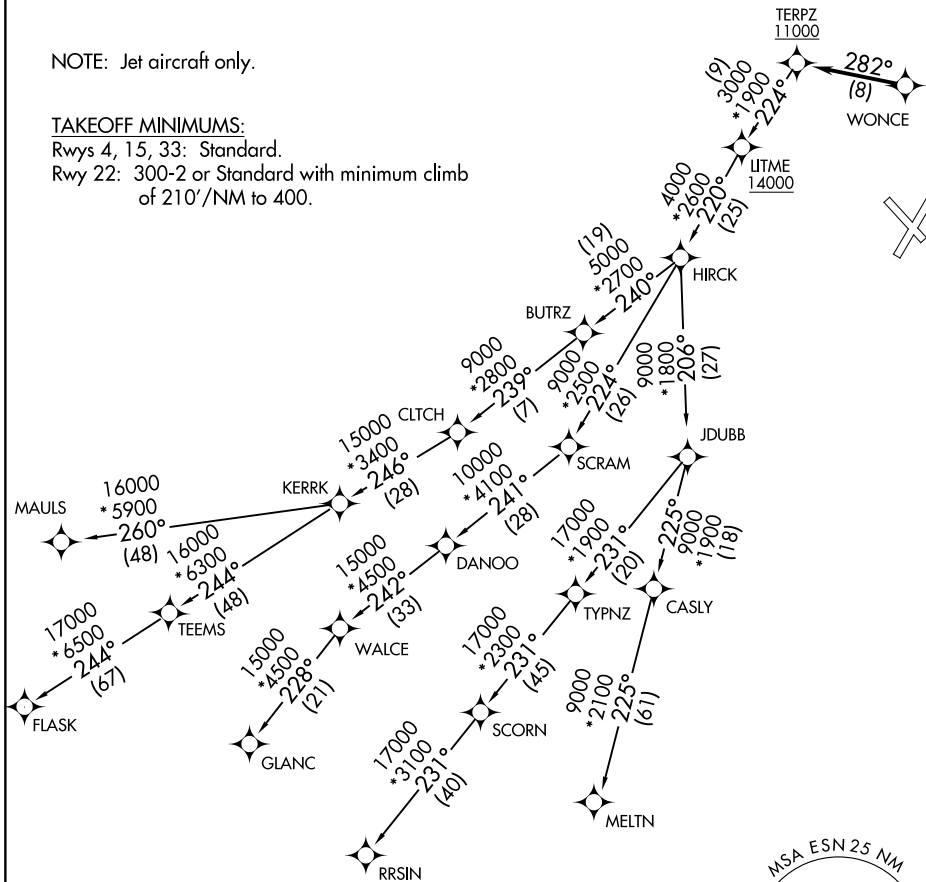
**TOP ALTITUDE:**  
**17000**

NOTE: Jet aircraft only.

### TAKEOFF MINIMUMS:

Rwys 4, 15, 33: Standard.

Rwy 22: 300-2 or Standard with minimum climb of 210'/NM to 400.



NE-3, 14 MAY 2026 to 11 JUN 2026

NE-3, 14 MAY 2026 to 11 JUN 2026

NOTE: Chart not to scale.

# TERPZ EIGHT DEPARTURE (RNAV)

(TERPZ8.TERPZ) 11JUL24

EASTON, MARYLAND

EASTON/NEWNAM FLD (ESN)