

WAALK TWO ARRIVAL (RNAV)

TOMS RIVER, NEW JERSEY

ATLANTIC CITY APP CON
 124.6 327.125
 MC GUIRE APP CON
 126.475 363.8
 KNEL ATIS
 276.525
 KWRI ATIS
 110.6 270.1

TRENTON-ROBBINSVILLE

MONMOUTH EXEC

MC GUIRE FLD
(JOINT BASE MC GUIRE DIX LAKEHURST)

LAKEHURST MAXFIELD FLD

Ldg KWRI, KN14, KNEL,
 KBLM, KMJX, KQVAY, KN87

SOUTH JERSEY RGNL

FLYING W

OCEAN COUNTY

4 NM

030°

057°

247°

030°

030°

052°

039°

039°

039°

039°

039°

039°

039°

039°

039°

039°

039°

039°

039°

039°

039°

039°

039°

039°

039°

039°

039°

039°

039°

039°

039°

039°

039°

039°

039°

039°

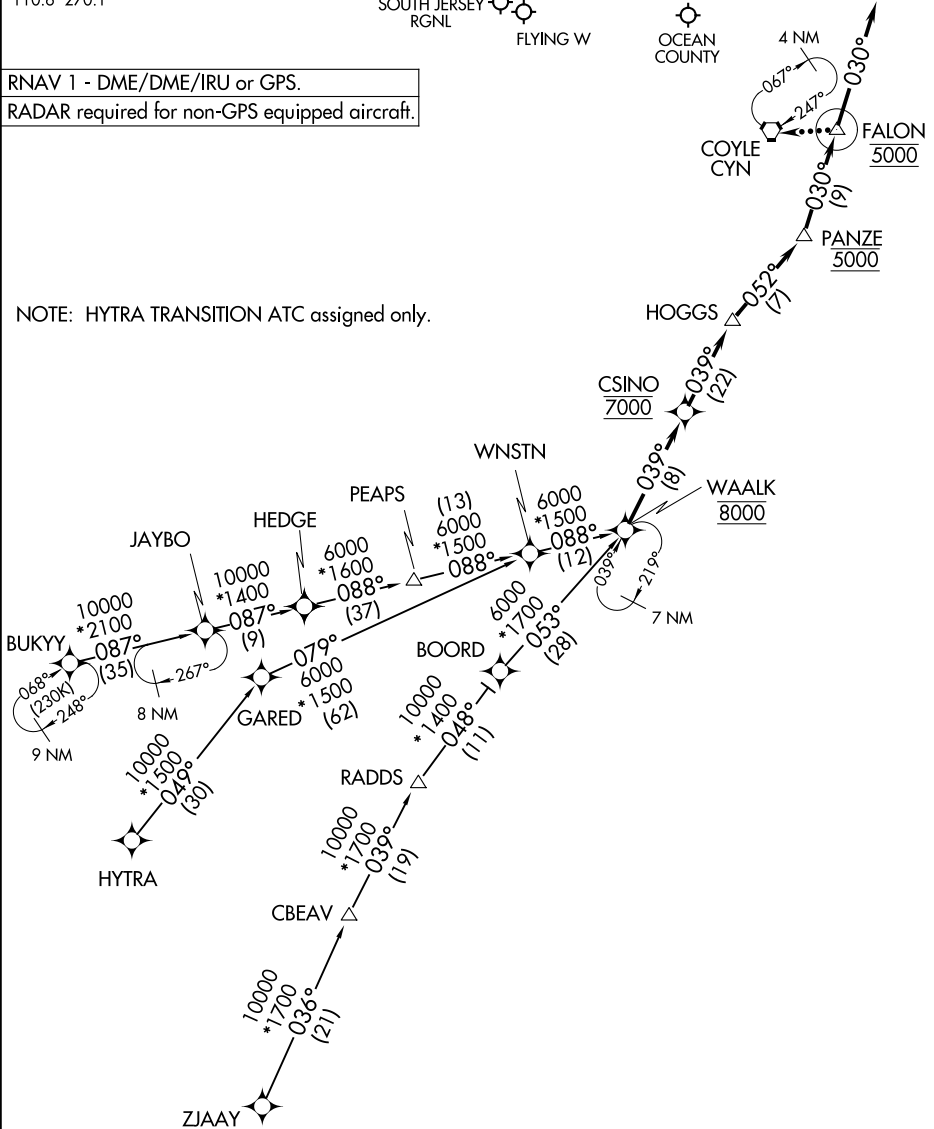
039°

039°

039°

RNAV 1 - DME/DME/IRU or GPS.
 RADAR required for non-GPS equipped aircraft.

NOTE: HYTRA TRANSITION ATC assigned only.



NE-2, 14 MAY 2026 to 11 JUN 2026

NE-2, 14 MAY 2026 to 11 JUN 2026

(CONTINUED ON FOLLOWING PAGE)

NOTE: Chart not to scale.

WAALK TWO ARRIVAL (RNAV)

TOMS RIVER, NEW JERSEY