

(OCN1.OCN) 24305

AL-5666 (FAA)

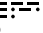
BOB MAXWELL MEML AIRFIELD (OKB)

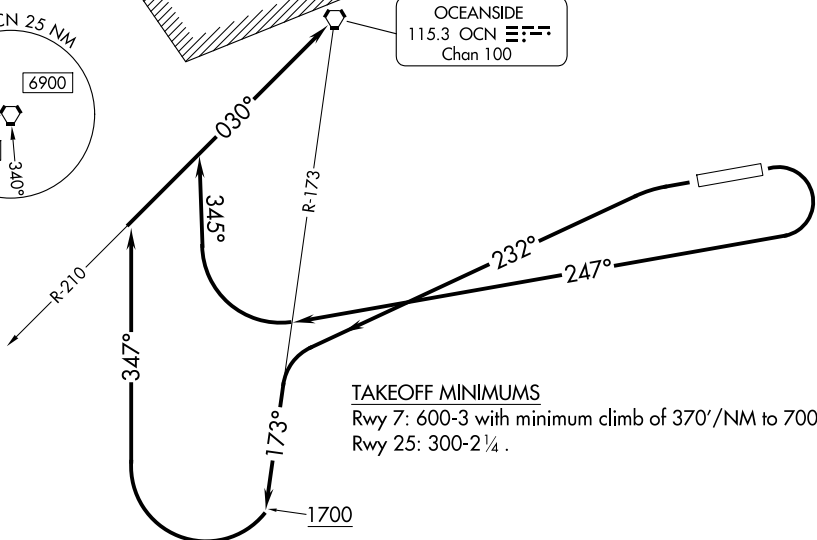
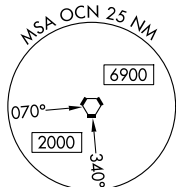
OCEANSIDE ONE DEPARTURE (OBSTACLE)

OCEANSIDE, CALIFORNIA

SOCAL DEP CON
127.3 323.0
ASOS
127.8
CTAF
122.725

R-2503A & D

OCEANSIDE
115.3 OCN 
Chan 100



TAKEOFF MINIMUMS

Rwy 7: 600-3 with minimum climb of 370'/NM to 700.
Rwy 25: 300-2¼.

(CONTINUED ON FOLLOWING PAGE)

NOTE: Chart not to scale.

DEPARTURE ROUTE DESCRIPTION

TAKEOFF RUNWAY 7: Climbing right turn on heading 247° to cross OCN R-173, then climbing right turn on heading 345° to intercept OCN R-210 to OCN VORTAC, then proceed on course. Do not exceed 200K until OCN VORTAC.

TAKEOFF RUNWAY 25: Climbing left turn on heading 232° to intercept OCN R-173 to 1700, then climbing right turn on heading 347° to intercept OCN R-210 to OCN VORTAC, then proceed on course. Do not exceed 200K until OCN VORTAC.

OCEANSIDE ONE DEPARTURE (OBSTACLE)

OCEANSIDE, CALIFORNIA

BOB MAXWELL MEML AIRFIELD (OKB)

(OCN1.OCN) 31OCT24

SW-3, 14 MAY 2026 to 11 JUN 2026

SW-3, 14 MAY 2026 to 11 JUN 2026